

Datasheet



SLIM Air HONEYCOMB® Aerator STD Size M24x1

flow, stop and go®



aerated stream

Slim Air aerators provide an excellent aerated stream. Thanks to their low height, they are particularly suited for slim spouts or wherever protruding aerators are not wanted for design reasons. Slim Air aerators are vandal-proof and compatible with all faucet threads of size M24x1.

Materials used

Body: POM
O-Ring: EPDM
Washer: NBR

Model Overview

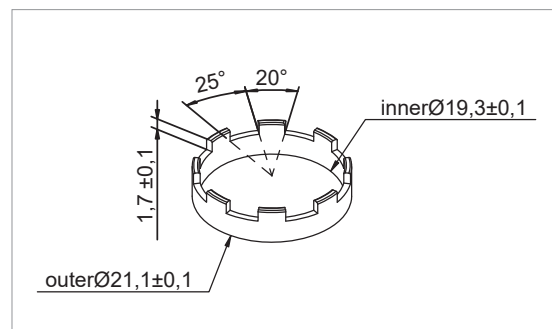
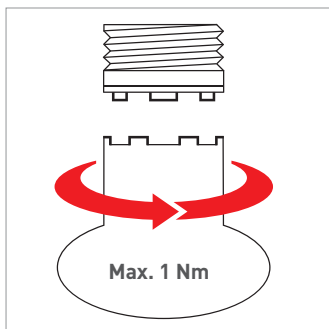
SLIM Air HONEYCOMB®

Imperial PCA® flow rates	Color Code	STD Insert	Wetted surface area (in mm²)
PCA® 1.0 gpm max.	blue	40.8358.010	4525
PCA® 1.2 gpm max.	pink	40.8360.010	4525
PCA® 1.5 gpm max.	green	40.8356.010	4585
PCA® 1.75 gpm max.	light blue	40.8361.010	4585
PCA® 2.0 gpm max.	lilac	40.8357.010	4585
PCA® 2.2 gpm max.	yellow	40.8353.010	4585

Metric PCA® flow rates	Color Code	STD Insert	Wetted surface area (in mm²)
PCA® 5.0 l/min.	orange	40.8351.010	4509
PCA® 7.0 l/min.	light green	40.8355.010	4509
PCA® 8.0 l/min.	white	40.8354.010	4509
V (optimal performance and aeration from 0.2 to 1.0 bar)	blue white	40.8330.010	4022

PCA® = Pressure Compensating Aerator: constant flow rate irrespective of line pressure

Assembly Instructions



Use NEOPERL key 09.9170.0 to assemble or exchange the aerator or refer to above dimensions for self-made assembly tools.

Datasheet

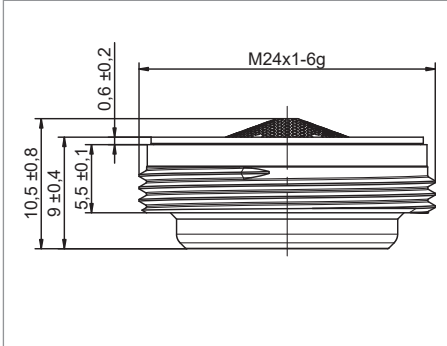
SLIM Air HONEYCOMB® Aerator
STD Size M24x1



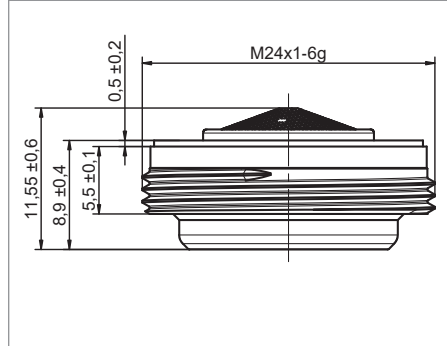
flow, stop and go®

Dimensions (in mm)

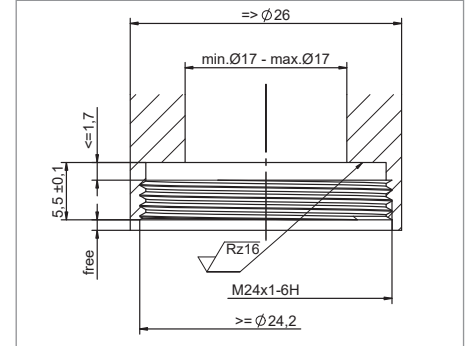
according to EN246



Slim Air HC-STD-V



Slim Air HC-STD-PCA



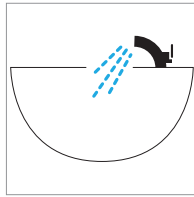
Recommended mounting dimensions

For pressure resistance reasons, thread must be true to gage!
Screw aerator in until flush with spout end.

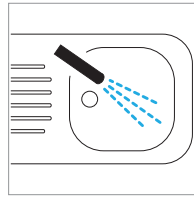
Application Areas



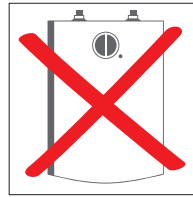
Drinking water only



Basin faucet



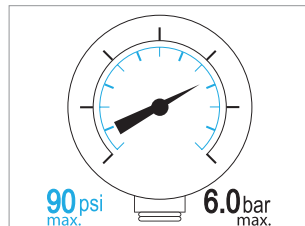
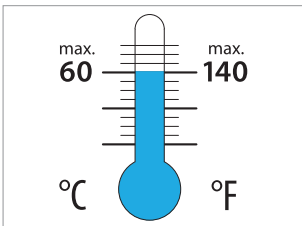
Kitchen faucet



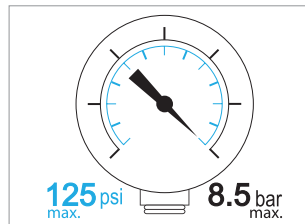
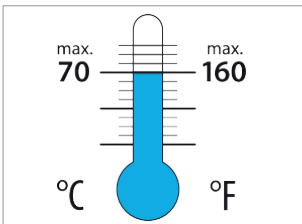
Not suitable for
pressureless water
heaters

Operating Conditions

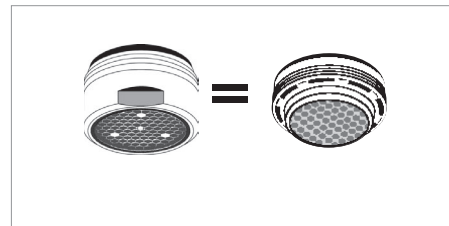
Continuous



Short-term (3 minutes max.)



Compatibility



100% compatible with M24x1

ATTENTION!

Product may not be altered!

Shall be used for hot water application exceeding 70°C

Indicated pressure values refer to supply line pressure.
Avoid water hammer.