

Datasheet

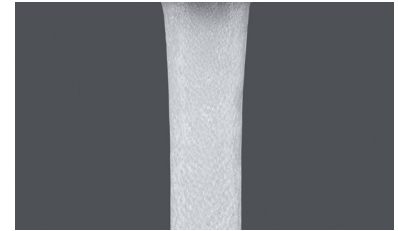


CACHÉ® HONEYCOMB® Aerator
TJ Size Male M18.5x1

flow, stop and go®



Materials used
Body: POM
O-Rings: EPDM (black)
Silicone (blue)



Aerated stream

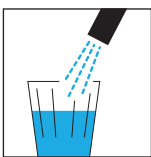
Model Overview

Restricted flow rates	Color Code	Part. No.	Wetted surface area (in mm ²)
Z (7.5-9.0 l/min @ 3 bar)	light green	43.2202.010	4191
A (13.5-15.0 l/min @ 3 bar)	light blue	43.2203.010	4261
B (22.8-25.2 l/min @ 3 bar)	dark blue	43.2205.010	4275
X (2.2 gpm max @ 60 psi)	red	43.2201.010	4198
Q optimal performance & aeration: 0.1-0.6 bar	green	light grey ring 43.2275.010	4267
V optimal performance & aeration: 0.2-1 bar	blue	white ring 43.3230.010	4714

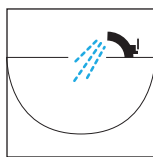
Imperial flow rates	Color Code	Part. No.	Wetted surface area (in mm ²)
PCA® 0.5 gpm max.	lime green	43.2259.010	4926
PCA® 1.0 gpm max.	dark blue	43.2258.010	4926
PCA® 1.2 gpm max.	pink	43.2260.010	4926
PCA® 1.5 gpm max.	green	43.2256.010	4926
PCA® 1.75 gpm max.	light blue	43.2261.010	4926
PCA® 2.0 gpm max.	lilac	43.2257.010	4926
PCA® 2.2 gpm max.	yellow	43.2253.010	4926

Metric flow rates	Color code	Part. No.	Wetted surface area (in mm ²)
PCA® 5.0 l/min.	orange	43.2251.010	4926
PCA® 7.0 l/min.	light green	43.2255.010	4926
PCA® 8.0 l/min.	white	43.2254.010	4926

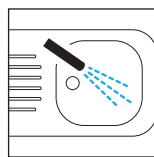
Application Areas



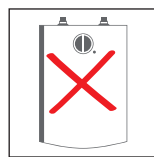
Drinking water only



Basin faucet

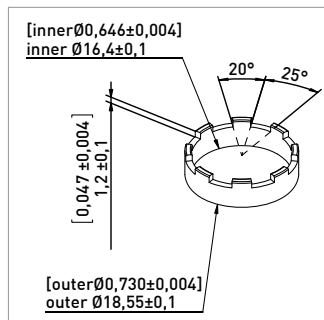
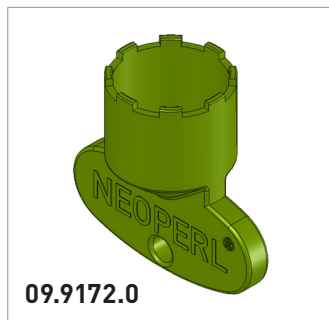
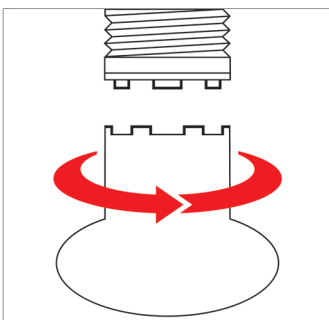


Kitchen faucet



Not suitable for pressureless water heaters

Assembly Instructions



ATTENTION!
Max. mounting torque **0.5 Nm**
Do not use silicone oil/grease

Use NEOPERL key 09.9172.0 or spare aerator cartridge to assemble or exchange the aerator or refer to above dimensions for self-made assembly tools.

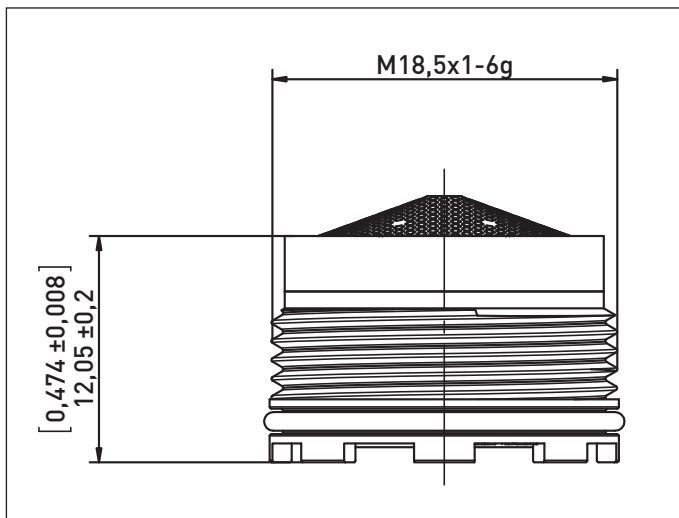
Datasheet

CACHÉ® HONEYCOMB® Aerator
TJ Size Male M18.5x1

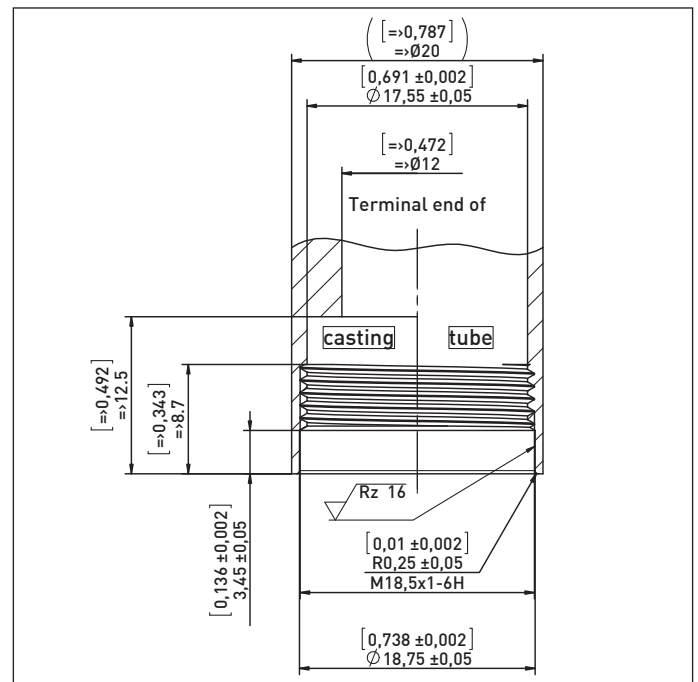
NEOPERL®

flow, stop and go®

Dimensions (in mm)



CACHÉ® HC TJ M18.5x1



Recommended Mounting Dimensions

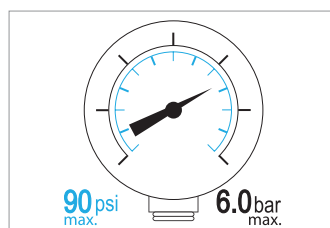
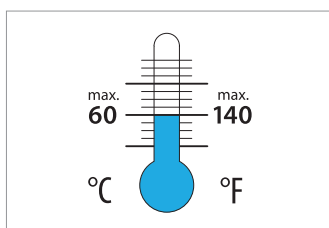
For pressure resistance reasons,
thread must be true to gage!
Screw aerator in until flush with spout end.

ATTENTION!

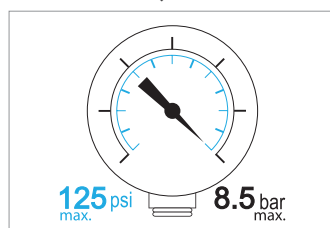
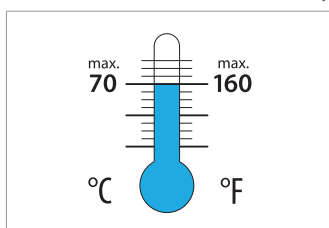
Product may not be altered!
Shall be used for hot water application exceeding 70°C

Operating Conditions

Continuous



Short-term (3 minutes max.)



Indicated pressure values refer to supply line pressure.
Avoid water hammer.

Trademarks are registered in various countries