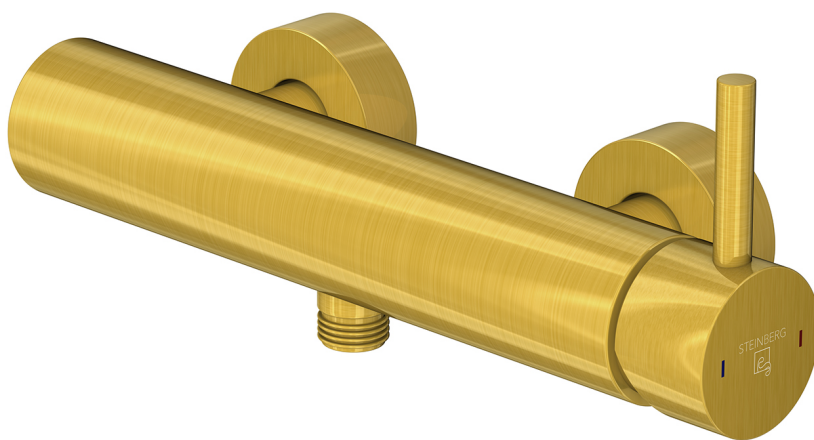


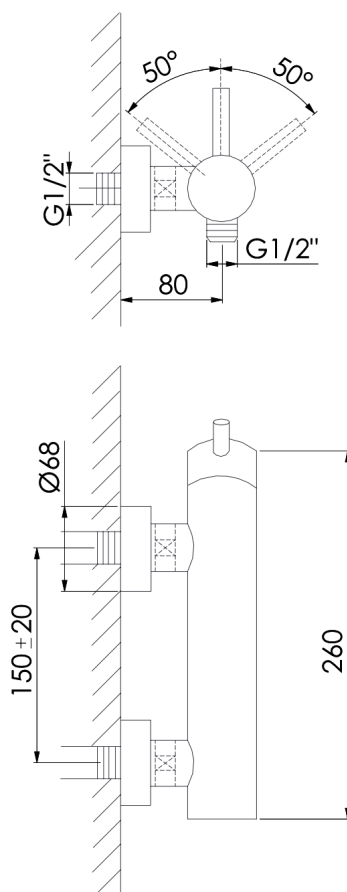
100 1220 BG

PRODUKTBILD



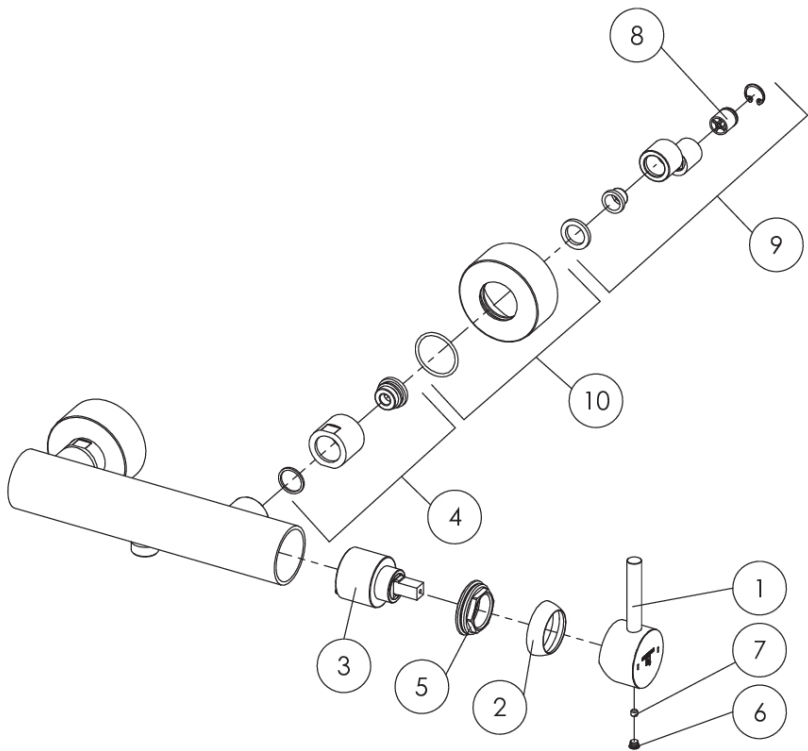
100 1220 BG


# TECHNISCHE ZEICHNUNG



100 1220 BG

EXPLOSIONSZEICHNUNG



PartNo	DE	EN	100 1220 BG  07.02.2023      STEINBERG 
1 099 9913 BG	EHM-Armaturenhebel komplett mit Logo, Brushed Gold	lever for single lever mixer complete with logo, brush.gold	
2 099 8013 BG	Kugelkappe, Brushed Gold	ball cap, brushed gold	
3 099 9020 1	Keramik Kartusche Ø40 mm "Kerox"	ceramic cartridge Ø40 mm "Kerox"	
4 099 1200	Überwurfmutterkomponente Ü 3/4" (2xSet), Brushed Gold	hexagonnut spare parts components (2 x sets), brush.gold	
5 099 8012	Überwurfmutter für Kartuschebefestigung (40mm)	Union nut for Cartridge mounting (40mm)	
6 099 4107 BG	Abdeckkappchen	cover cap	
7 099 1105	Madenschraube M5	grub screw M5	
8 099 9161	Rückflussverhinderer Ø 15mm	backflow preventer Ø 15mm	
9 099 9891	S-Anschlüsse 1/2" (Paar) mit Rückflussverhinderer	s-connections 1/2" (pair) with backflow preventer	
10 099 9877 BG	Rosette Ø68mm mit O-Ring (Paar), Brushed Gold	rosette Ø68mm with o-ring (pair), brushed gold	