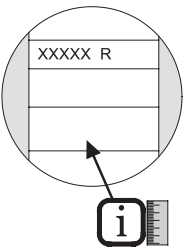
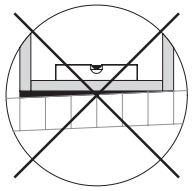
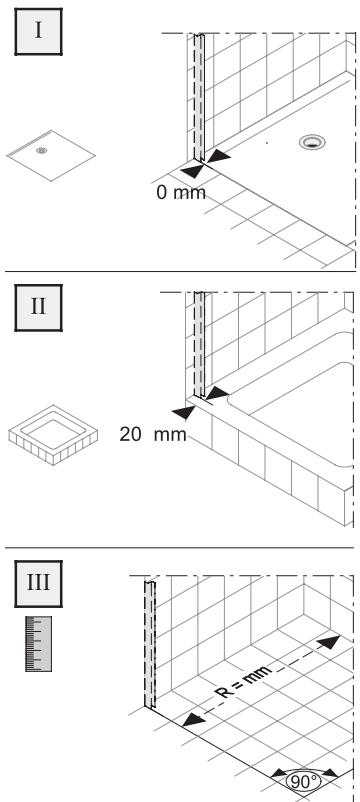
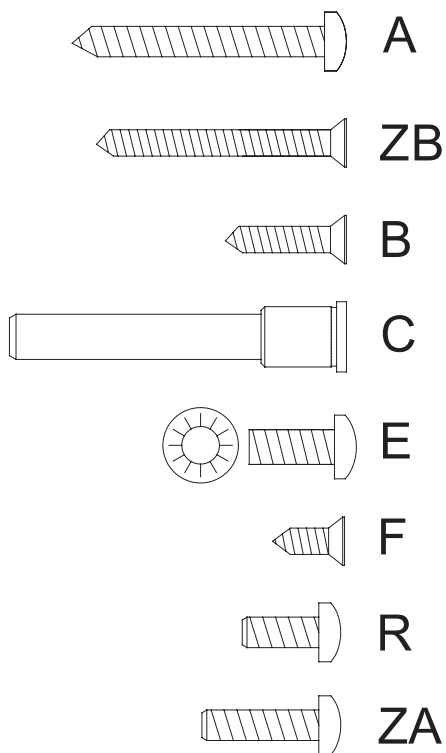


**(D)** Vor Montage bitte Gebrauchsanleitung lesen!

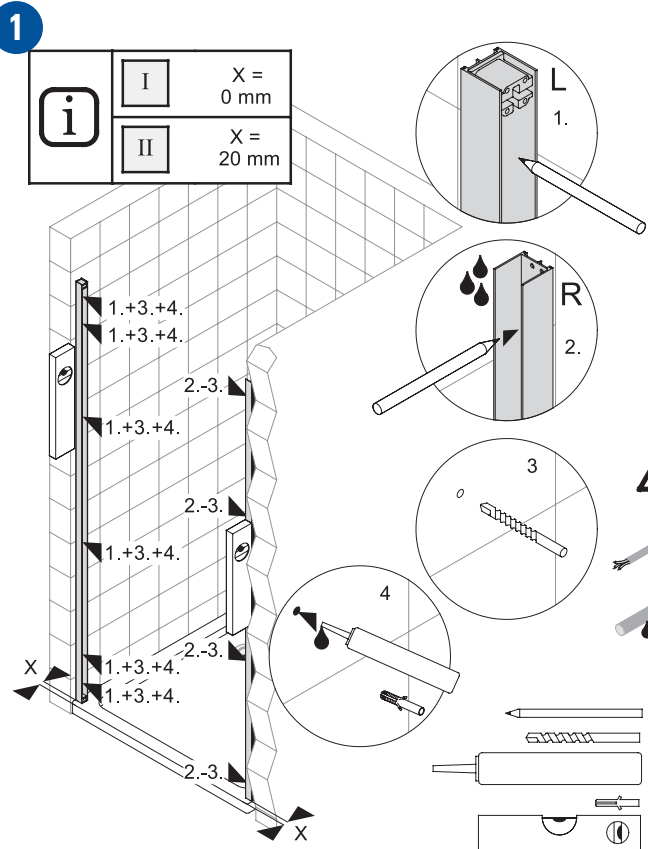
**(I)** Prima del montaggio leggere per favore le istruzioni per l'uso!

**(F)** Prière de lire le mode d'emploi avant de procéder au montage!

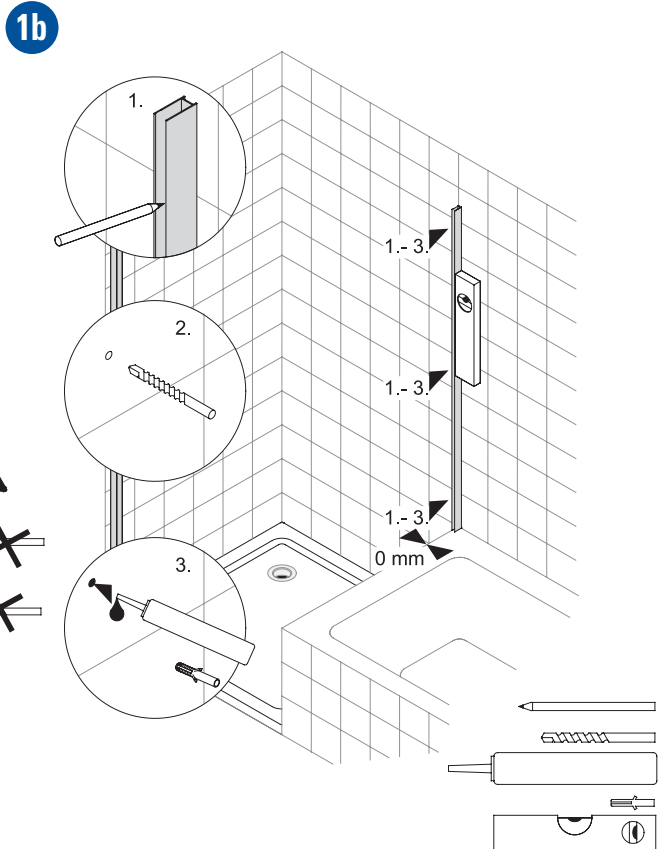
**(GB)** Please read the instructions of use prior to starting installation work!



NPWA - L

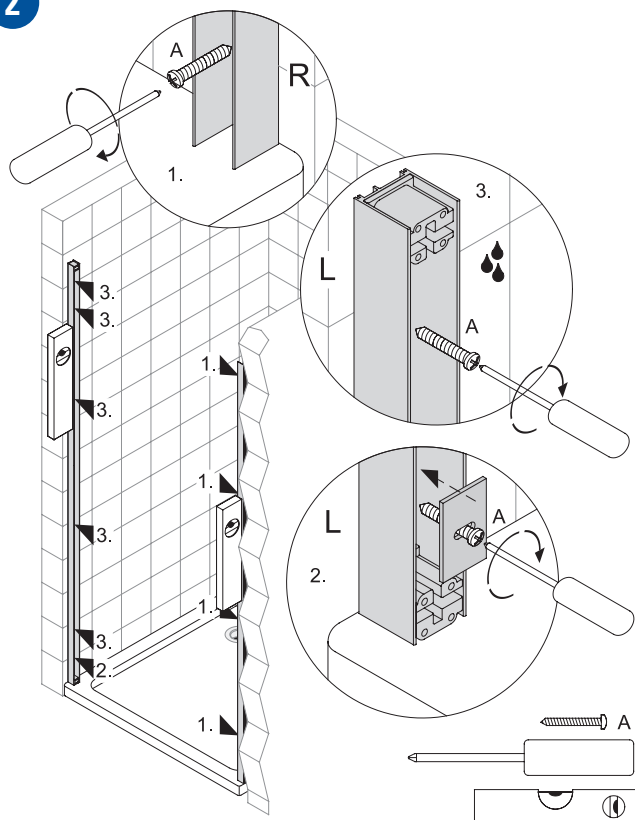


WNK - R



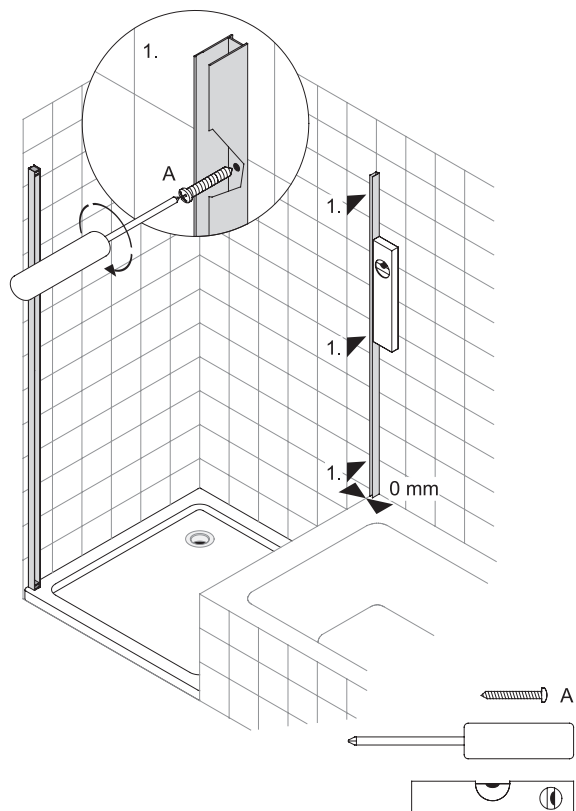
## NPWA - L

2



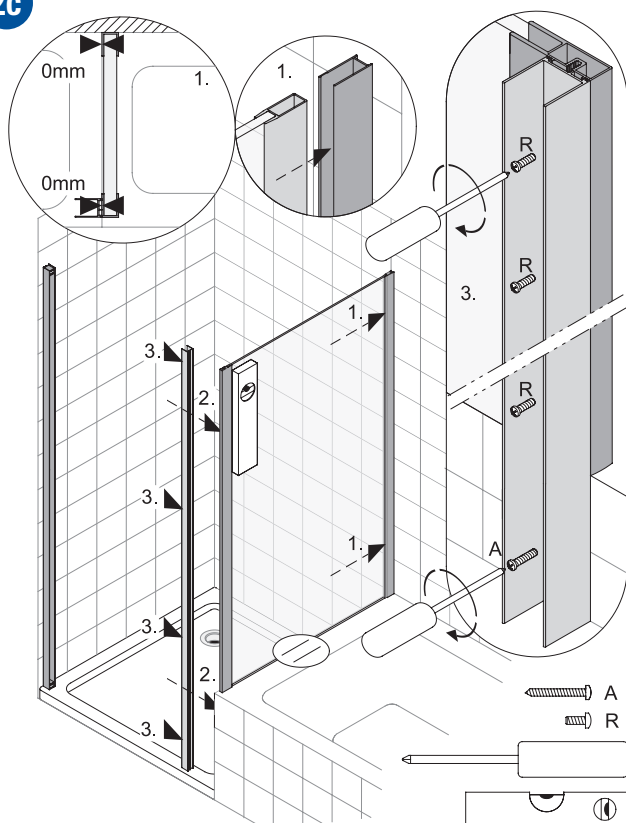
## WNK - R

2b



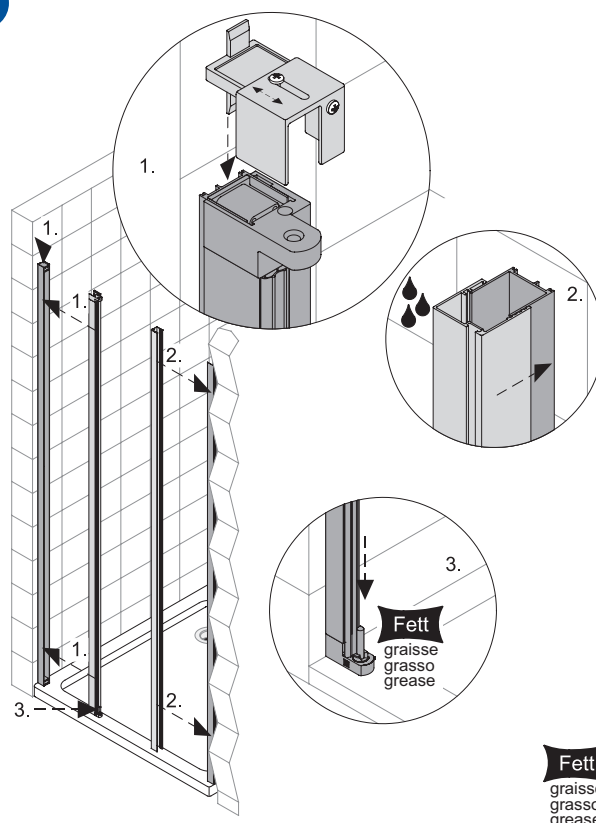
## WNK - R

2c



## NPWA - L

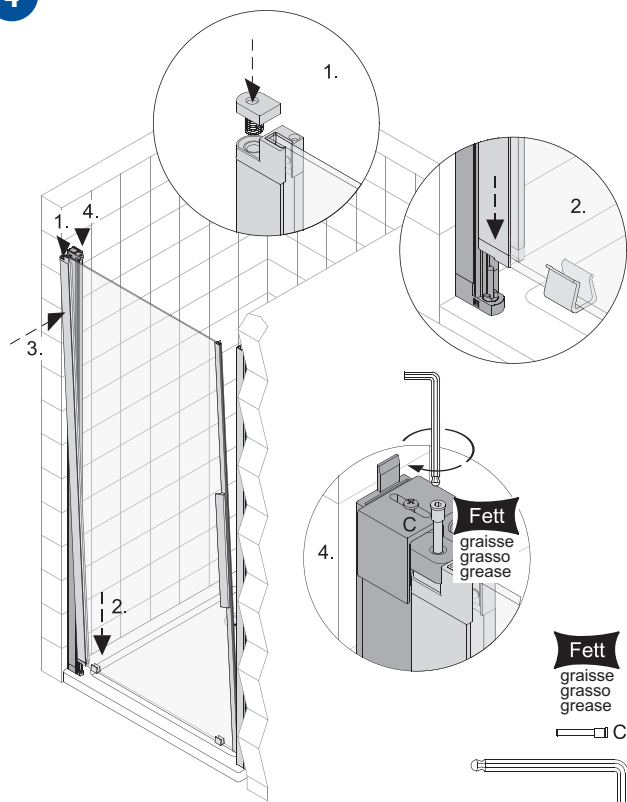
3



**Fett**  
graisse  
grasso  
grease

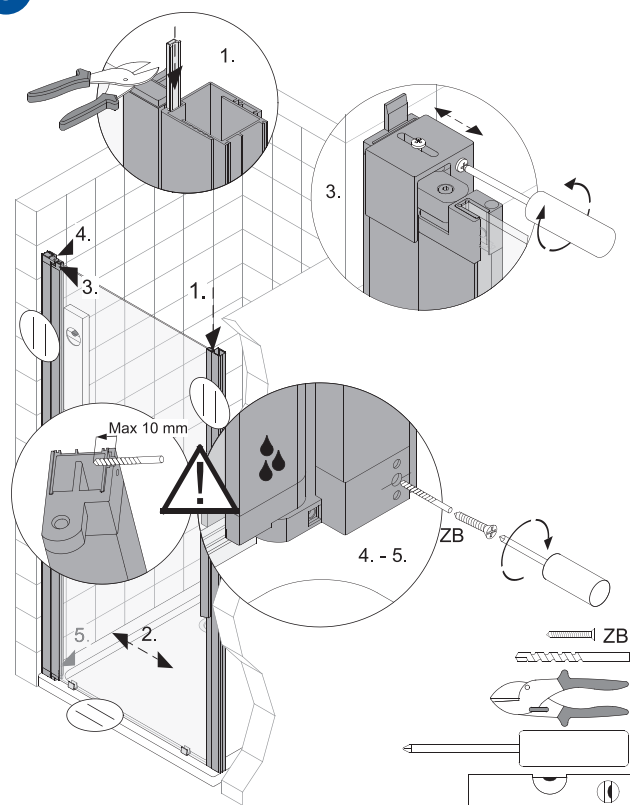
## NPWA - L

4



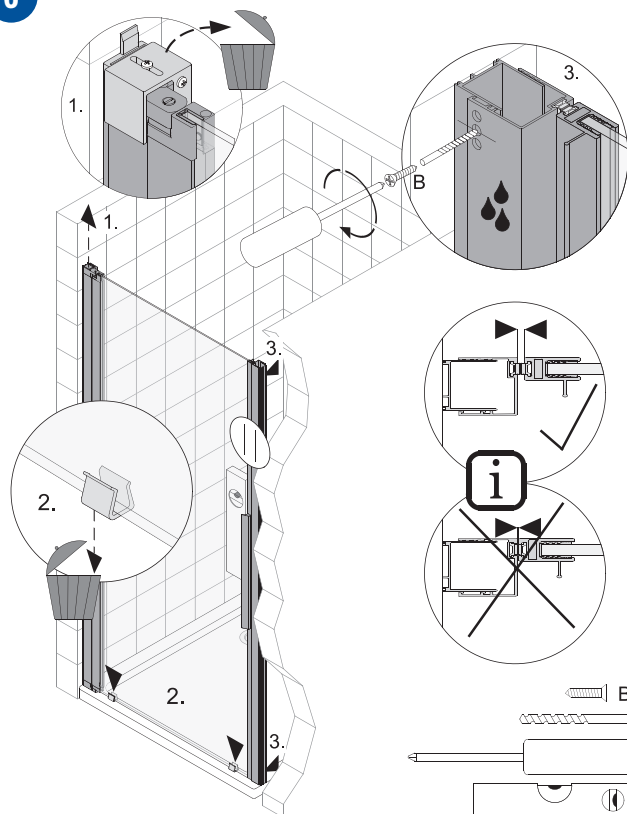
## NPWA - L

5



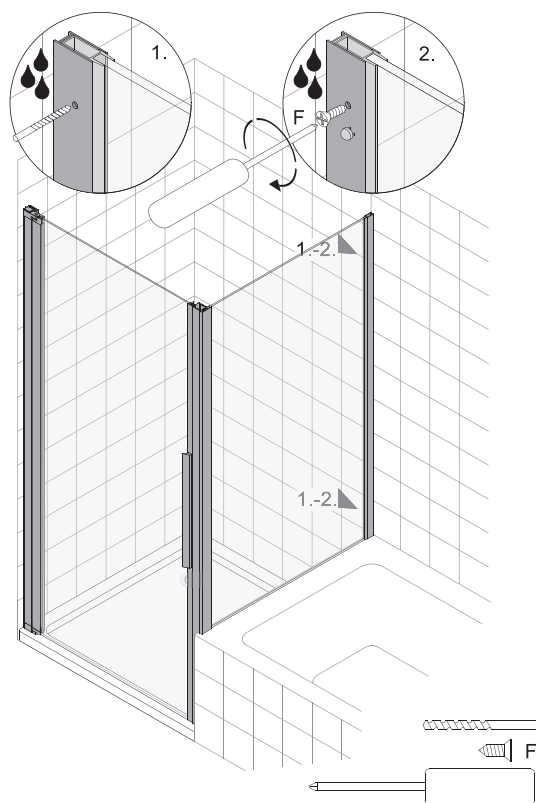
## NPWA - L

6



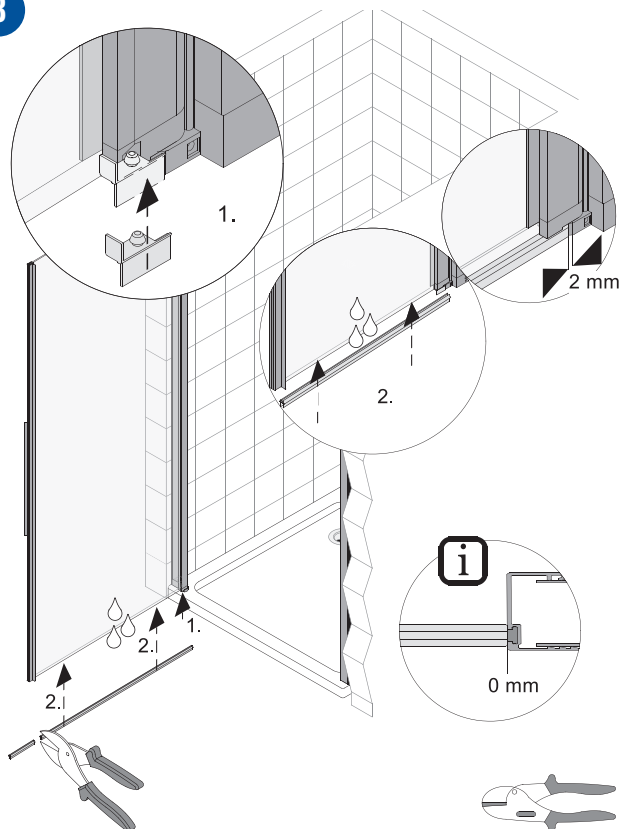
## WNK - R

7



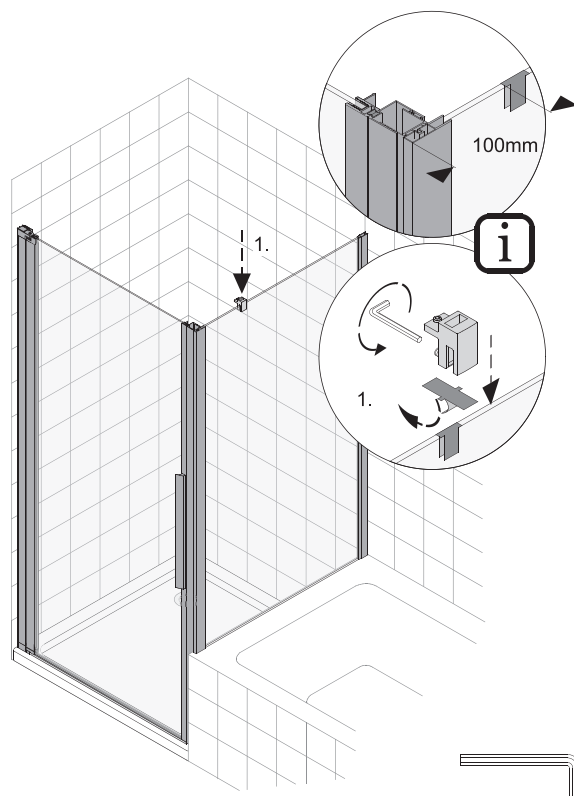
## NPWA - L

8



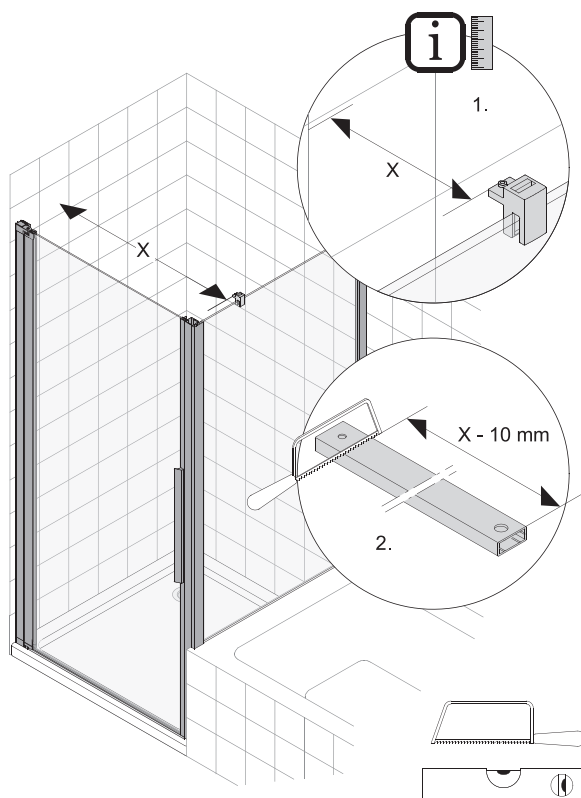
## WNK - R

9



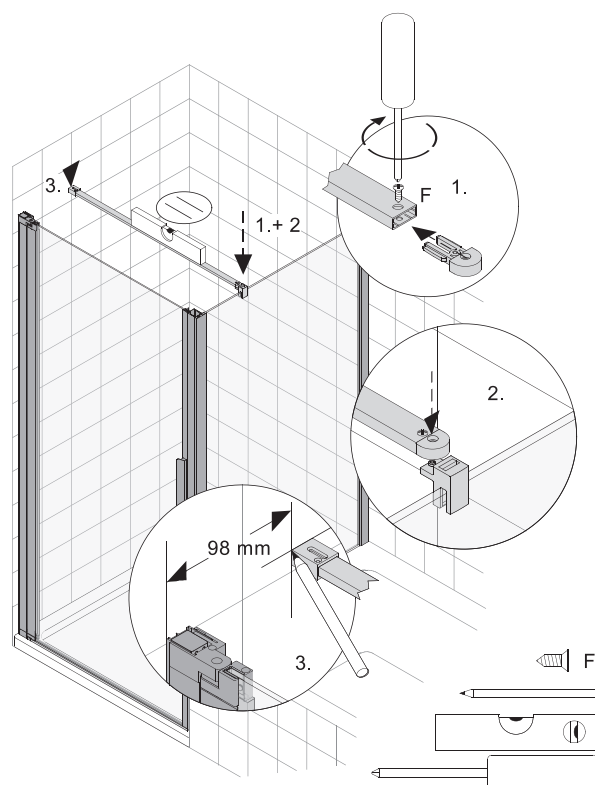
## WNK - R

10



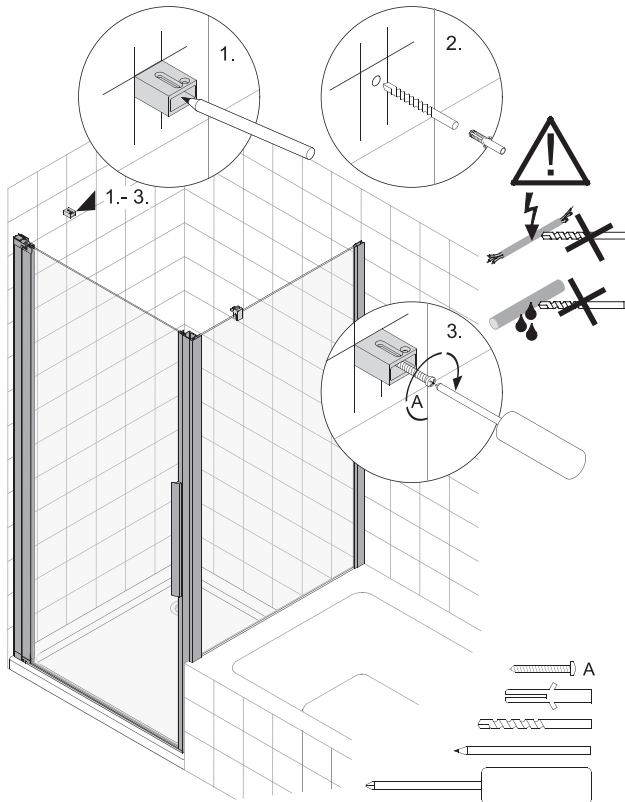
## WNK - R

11



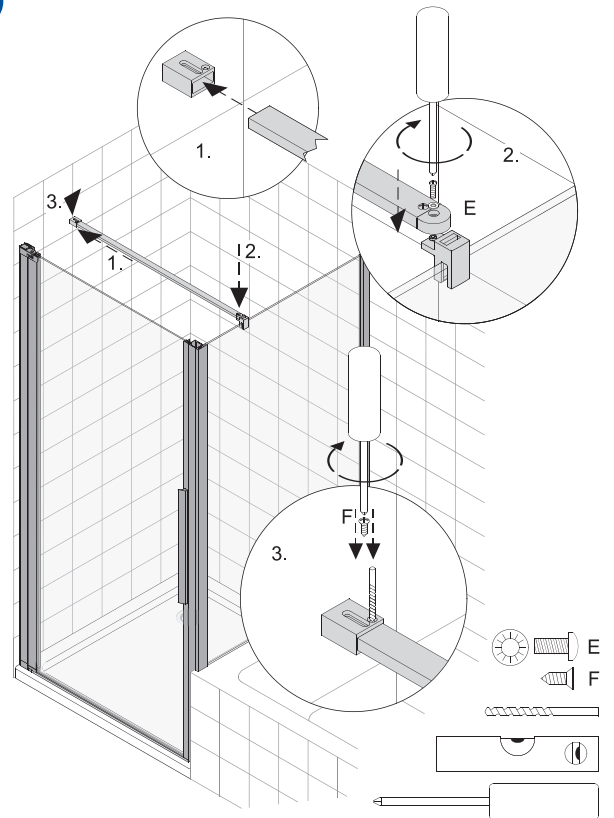
## WNK - R

12



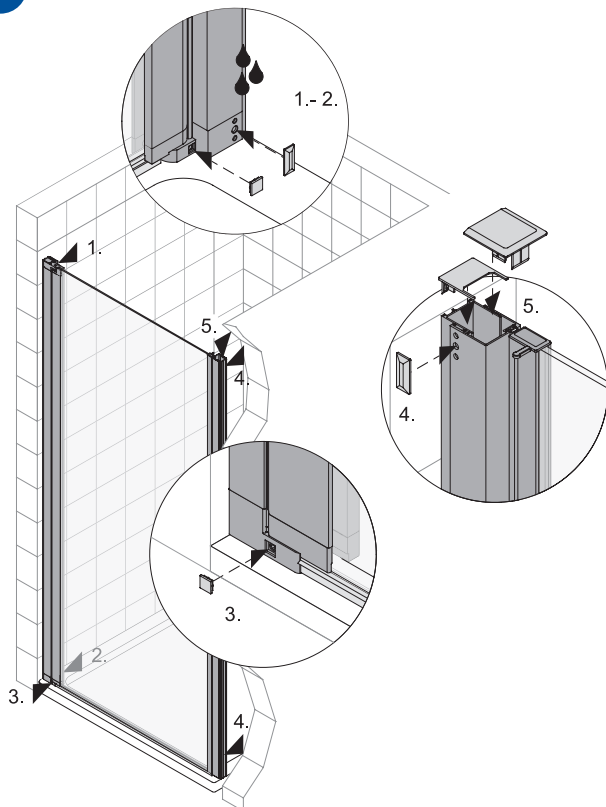
## WNK - R

13



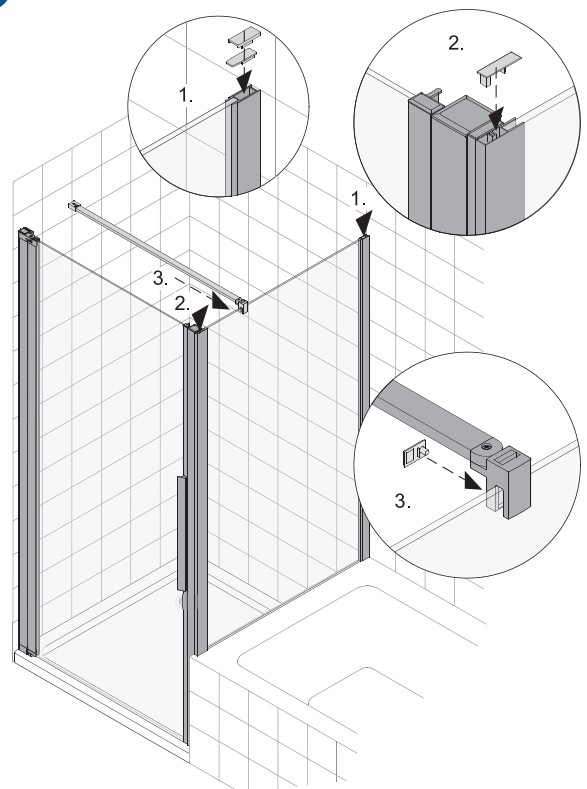
## NPWA - L

14

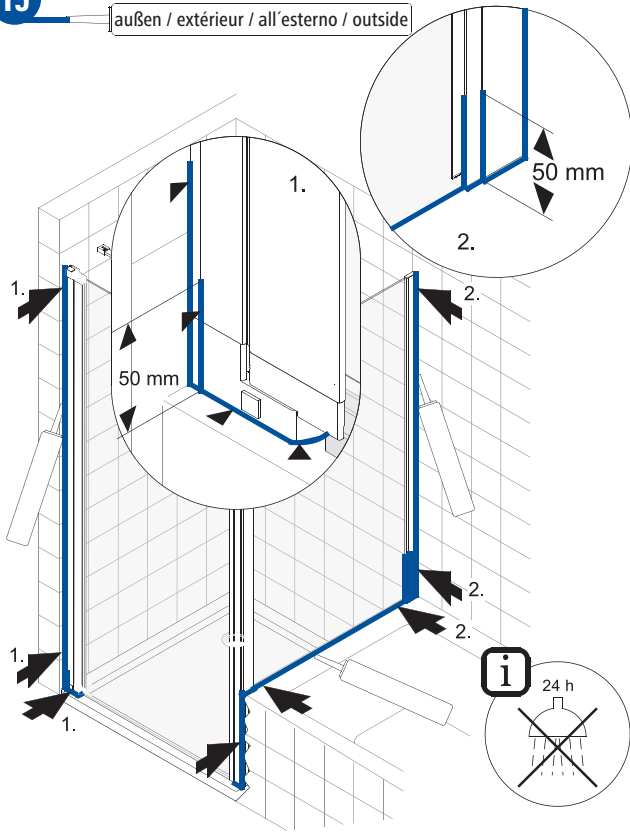


## WNK - R

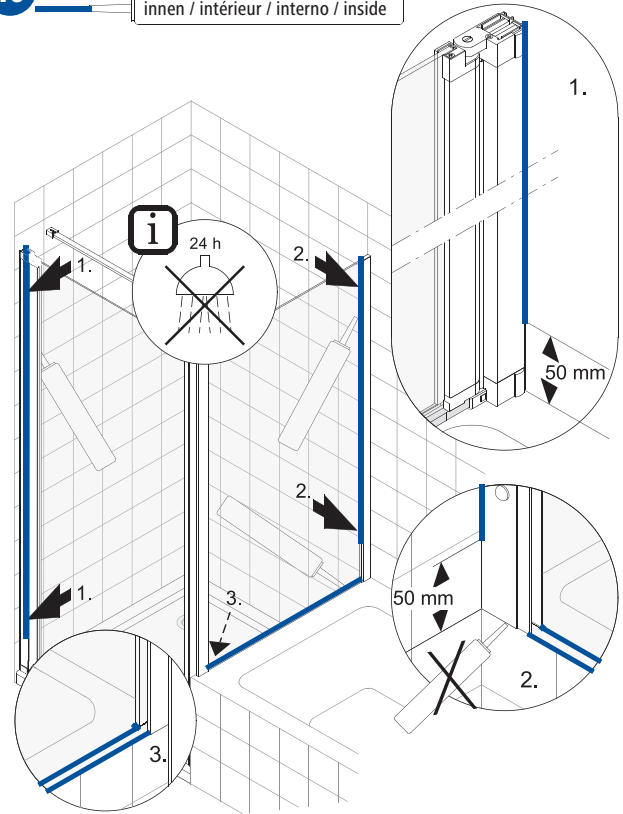
14b



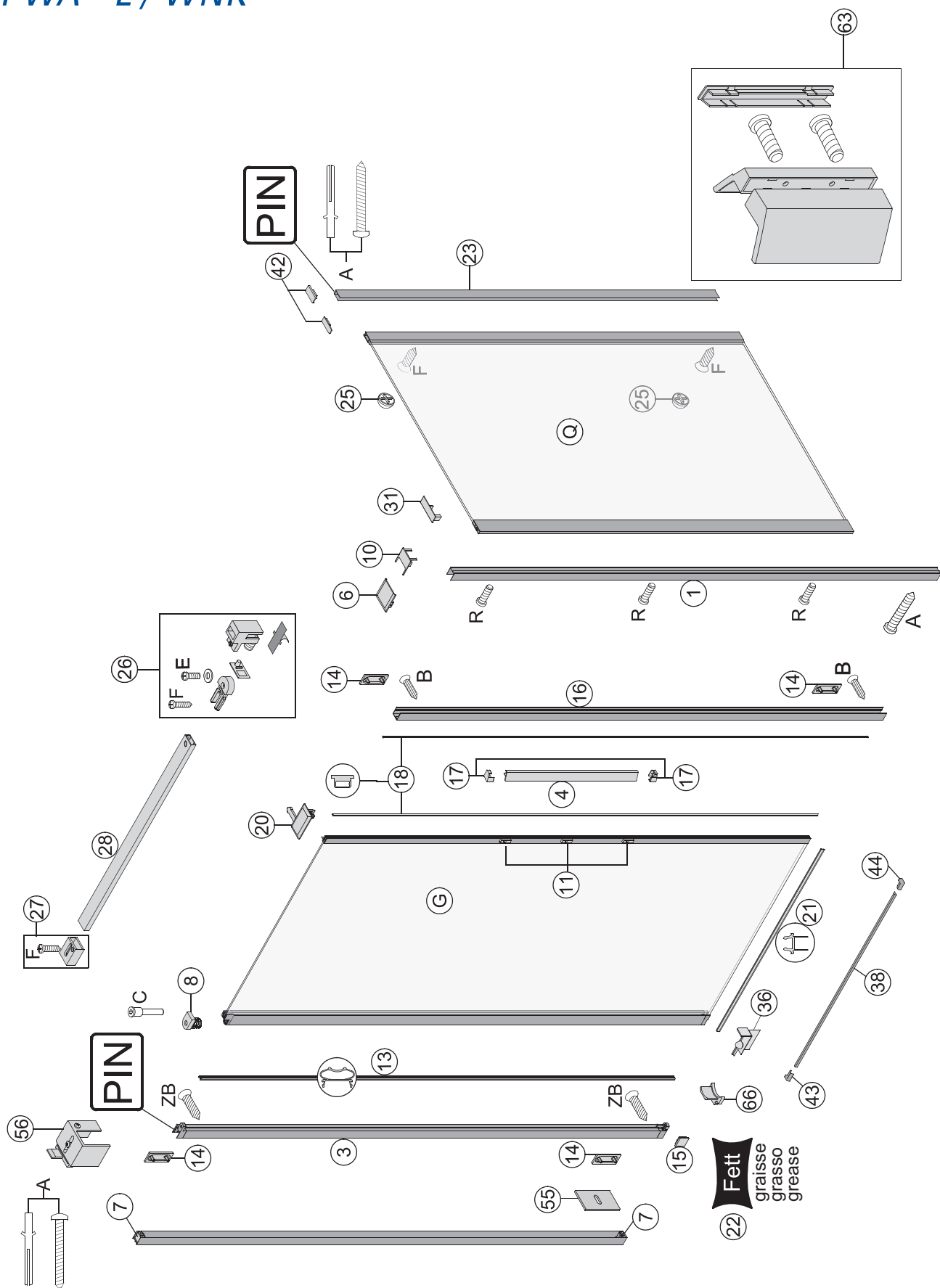
## 15 außen / extérieur / all'esterno / outside



## 16 innen / intérieur / interno / inside



NPWA - L / WNK







Ci riserviamo il diritto di apportare modifiche tecniche senza obbligo di preavviso. Decliniamo ogni responsabilità per errori in fase di stampa riguardanti i prodotti e/o loro specifiche tecniche.

We reserve the right to technical amendments.  
We do not take responsibility for printing errors  
or technical confusions.