



# HANSA

Installation and maintenance guide

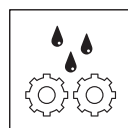




5-12



13



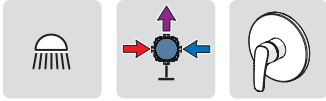
14-17



4, 18-23

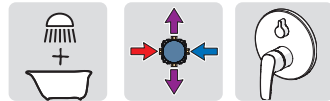
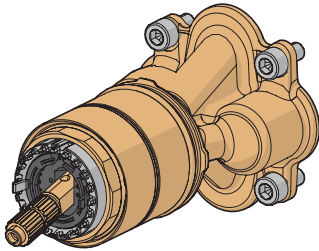


24



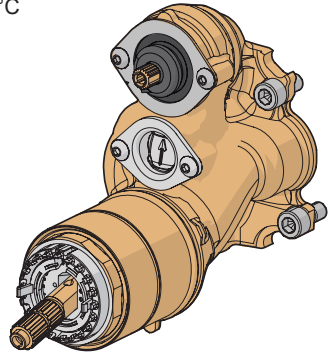
**1019378V**

EN 817  
100 - 1000 kPa  
max. +90°C

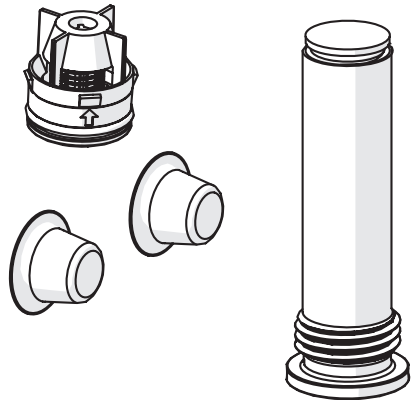


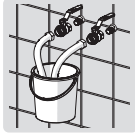
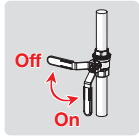
**1018461V**

EN 817  
100 - 1000 kPa  
max. +90°C

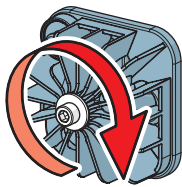


**8800 9000**

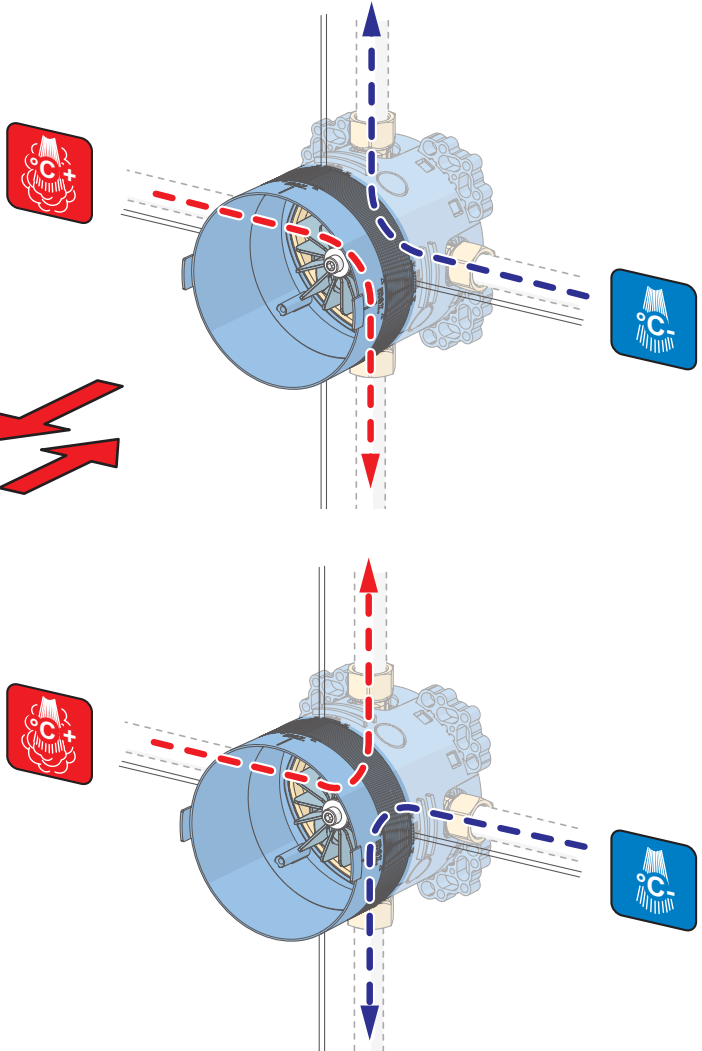




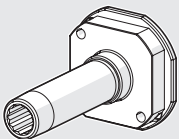
EN 1717  
EN 806-5



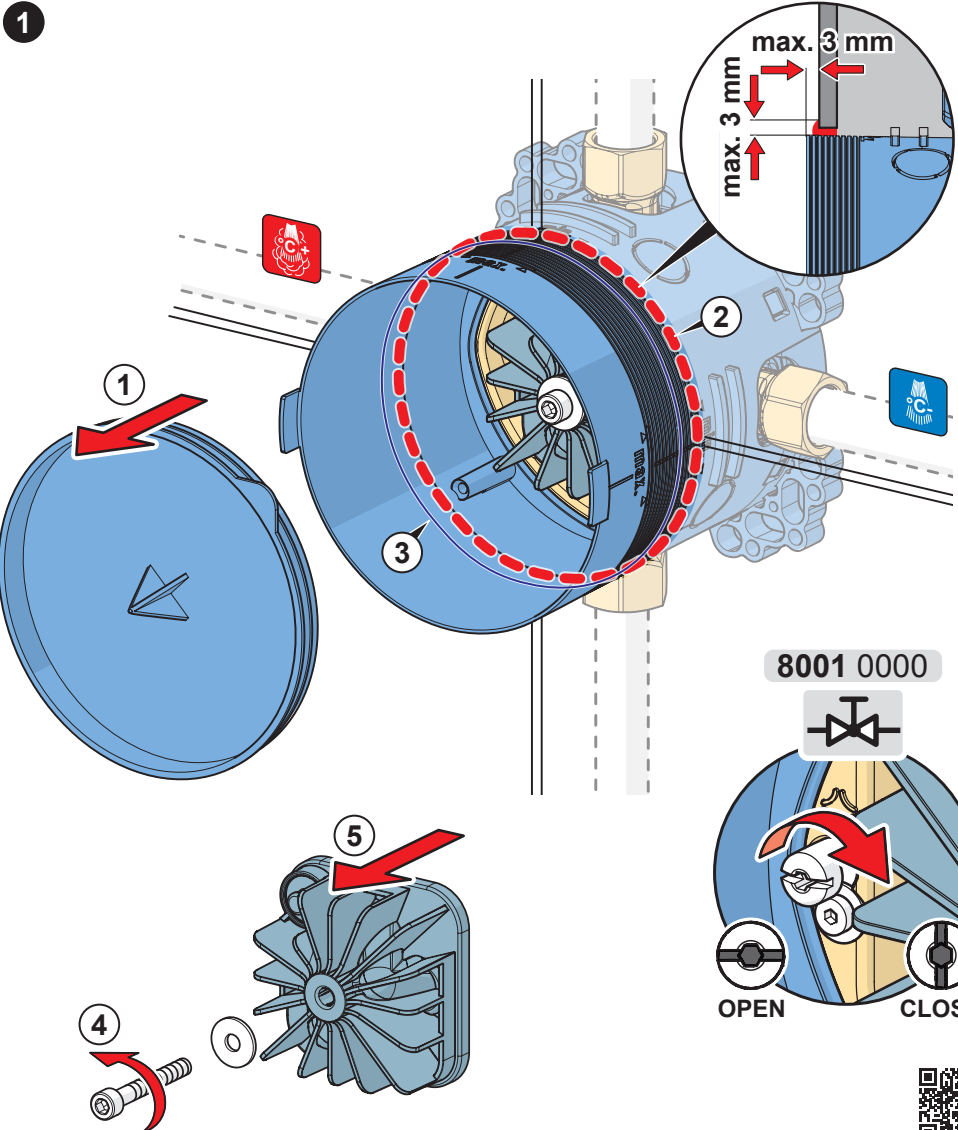
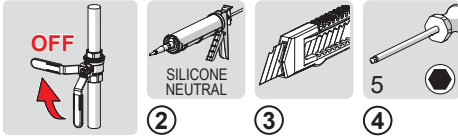
90°

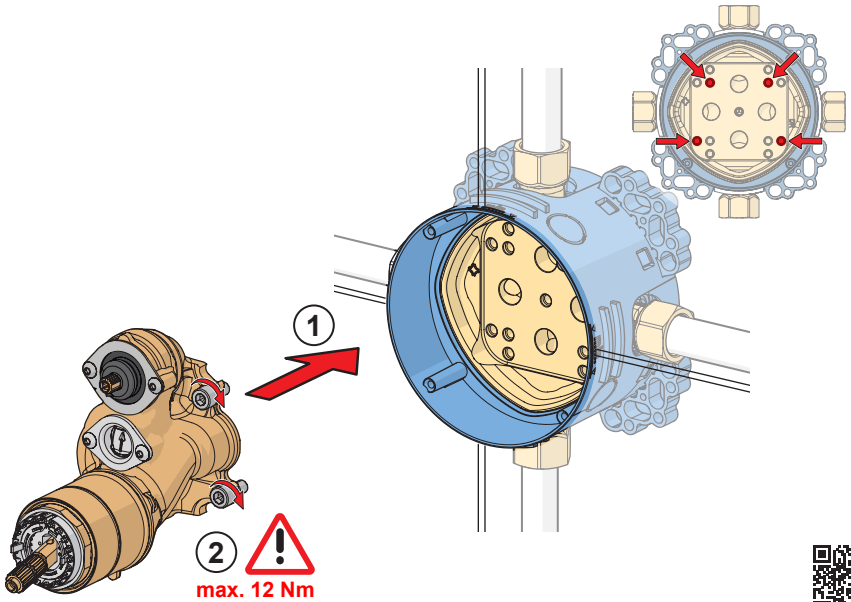
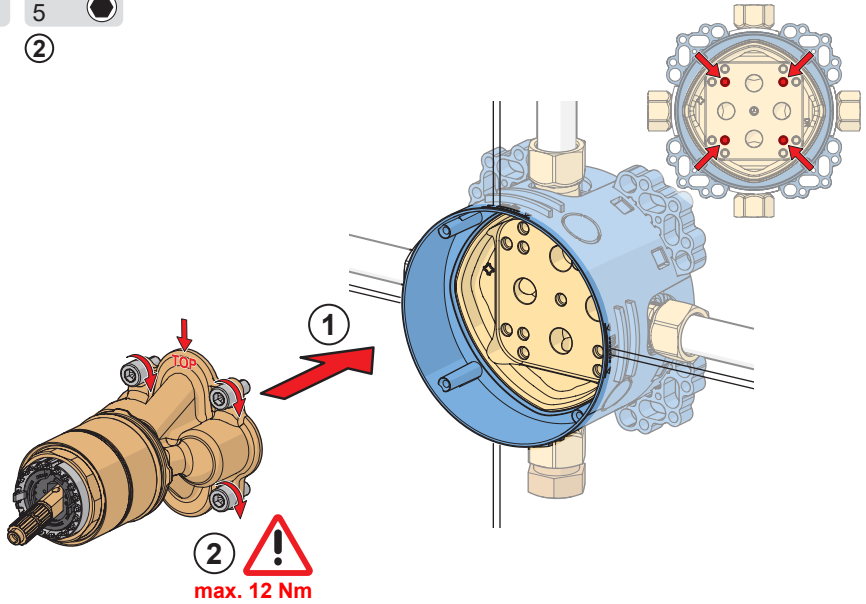
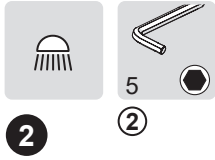


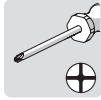
59 914 185



Rinsing tube

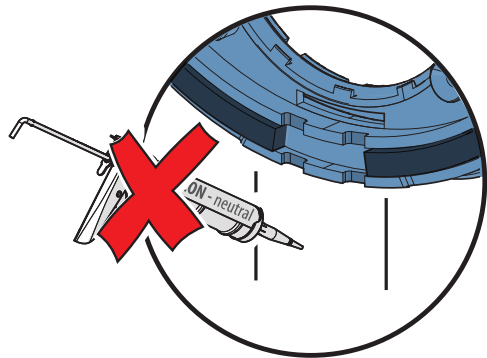
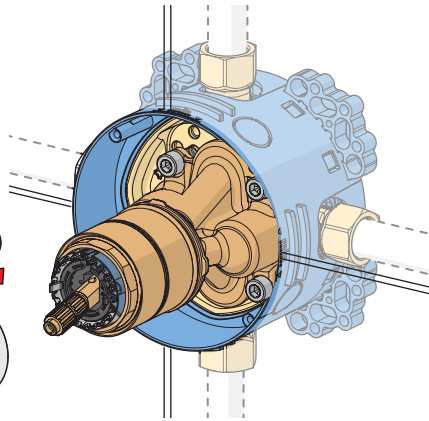
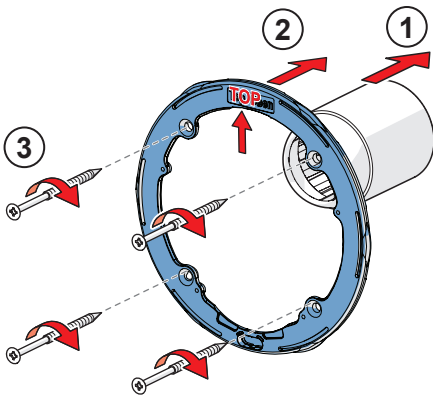


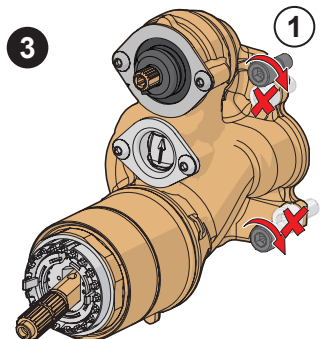
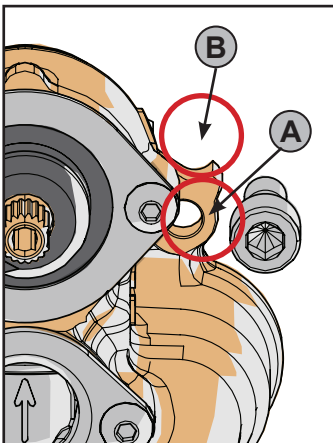
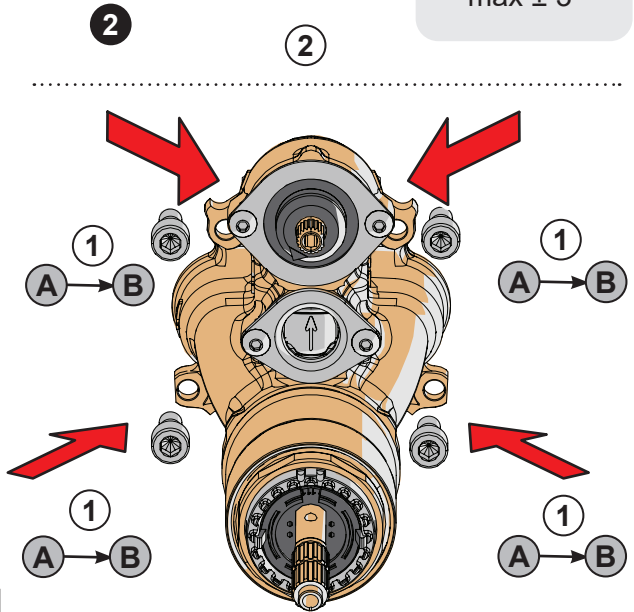
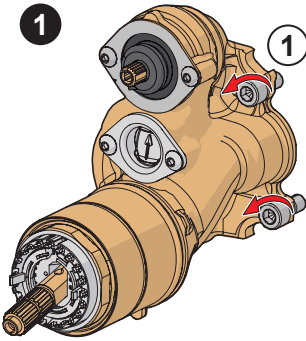
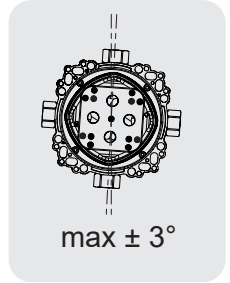
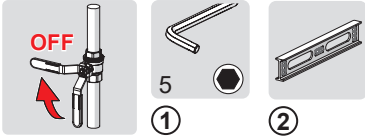




3

3

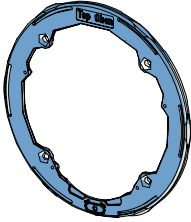




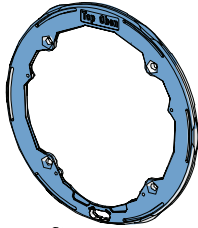


5

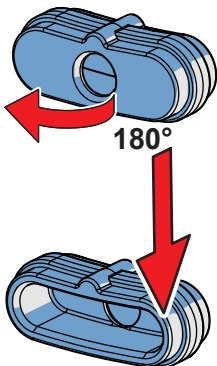
1



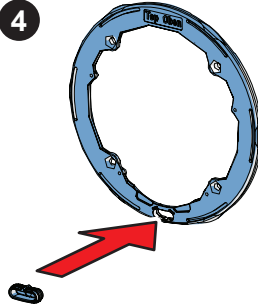
2



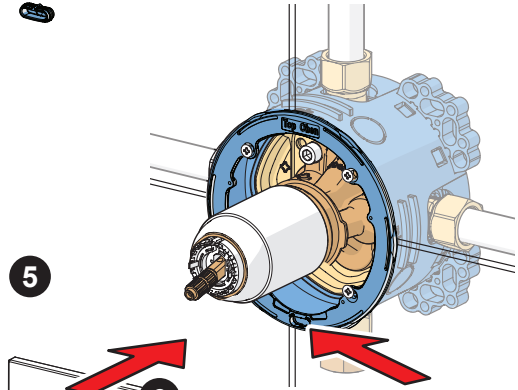
3



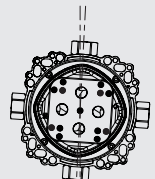
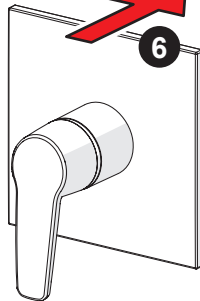
4



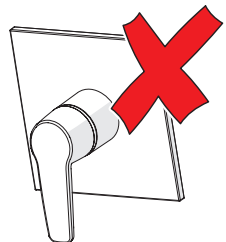
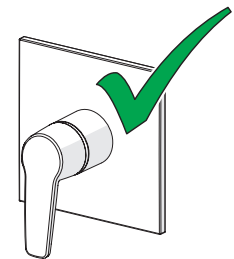
5

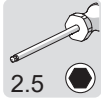


6

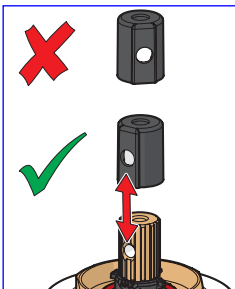
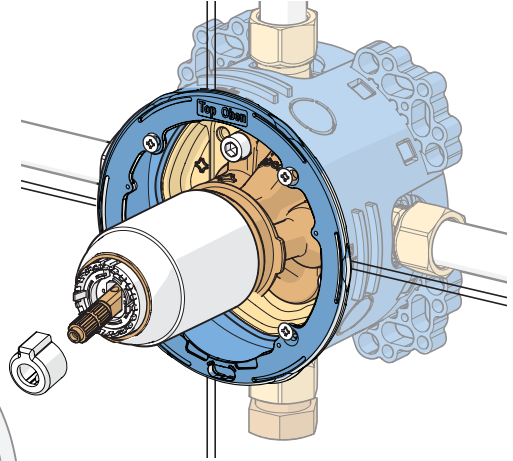
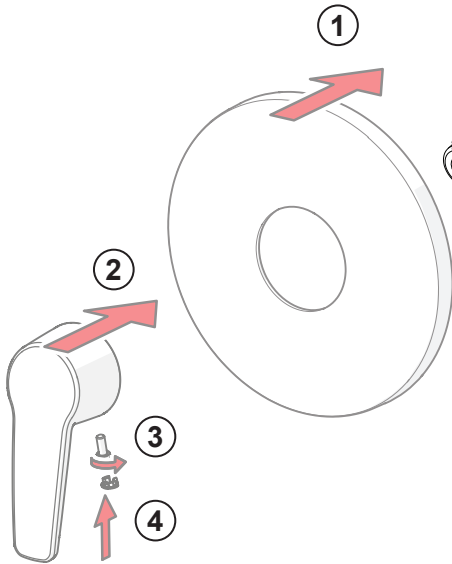
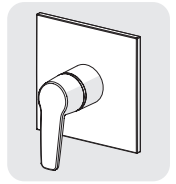
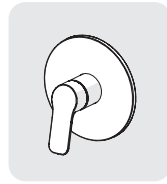


max  $\pm 3^\circ$

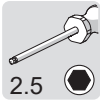




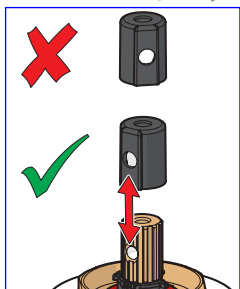
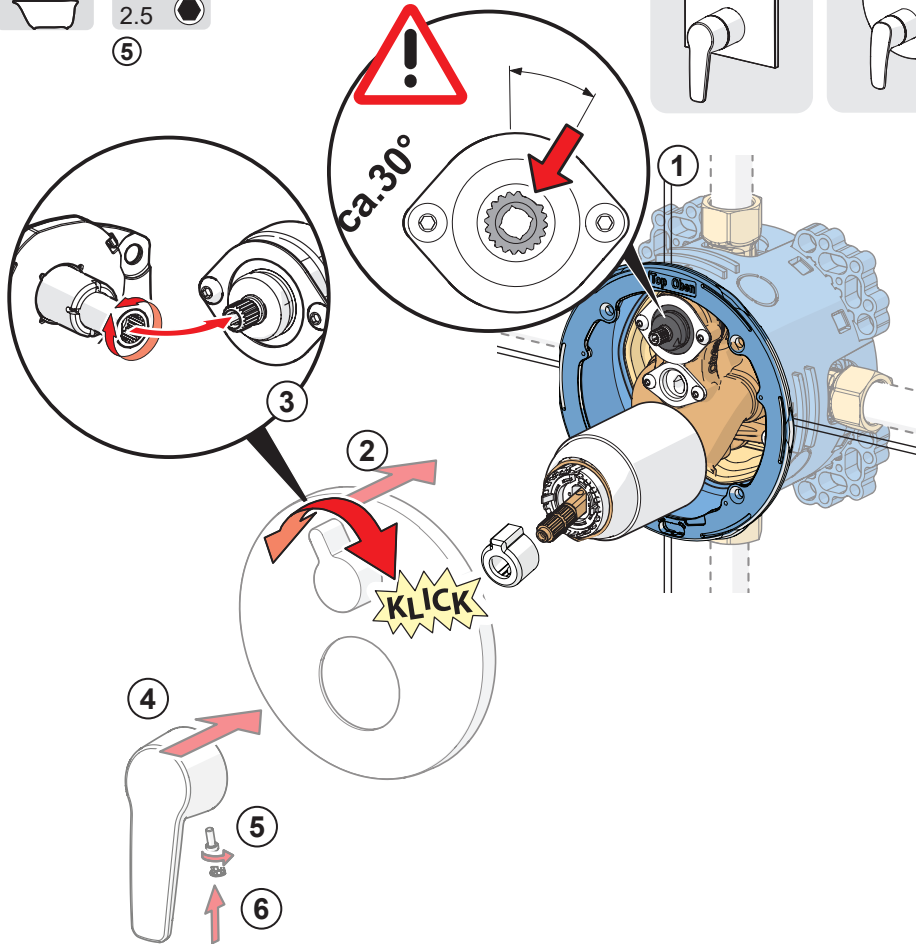
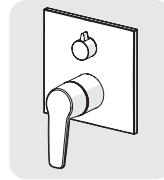
③

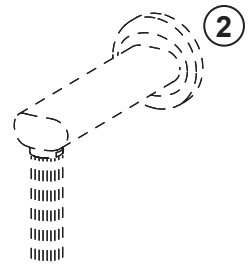
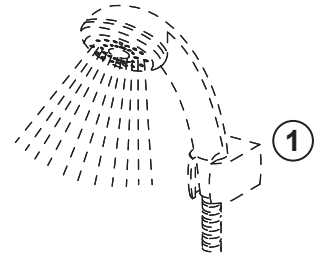
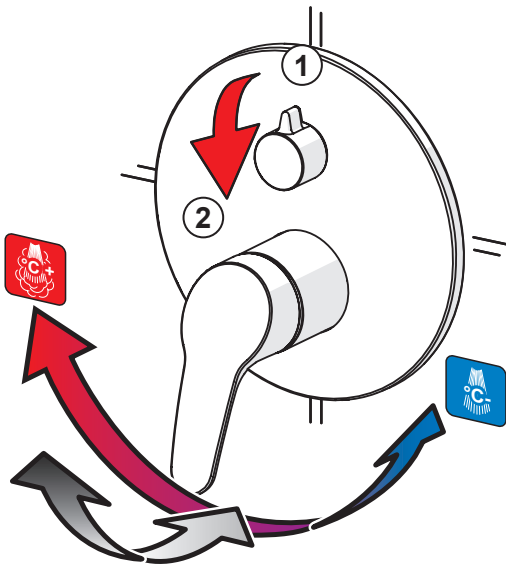
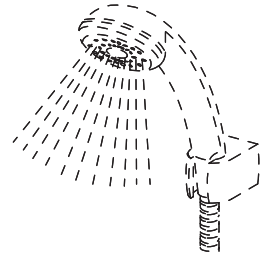
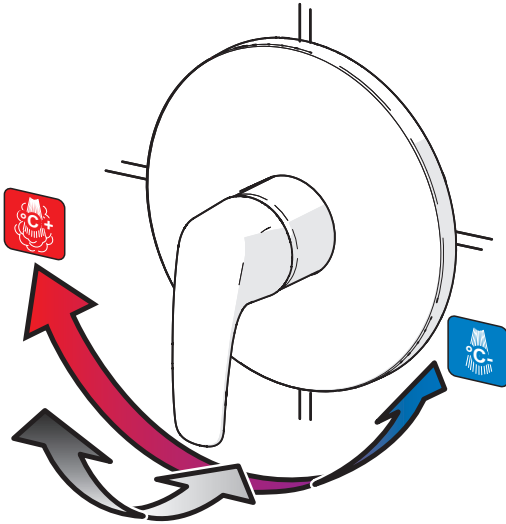


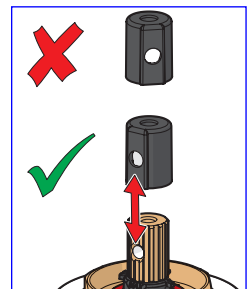
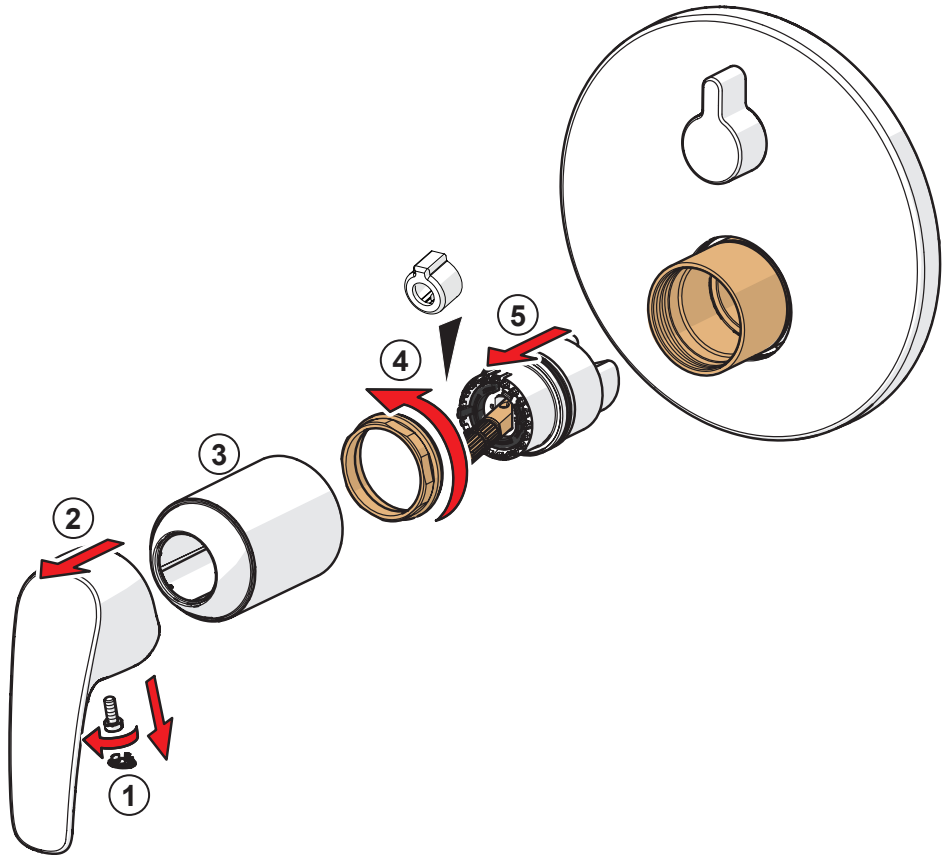
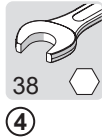
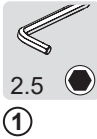
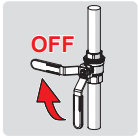
[http://movie.hansa.com/blbx\\_assembly](http://movie.hansa.com/blbx_assembly)

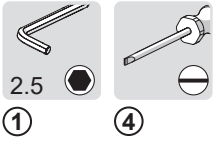
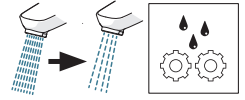


⑤



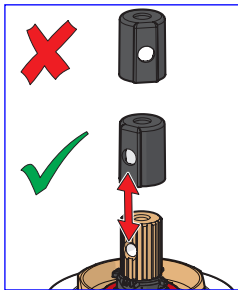
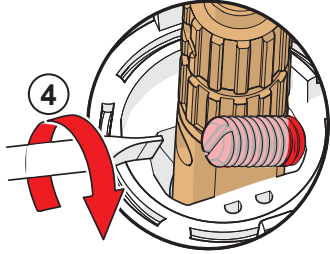
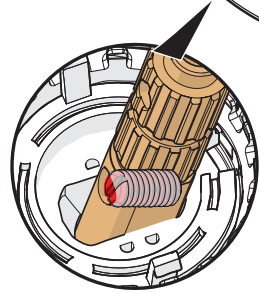
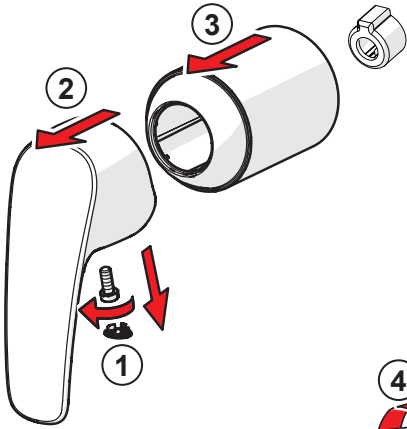
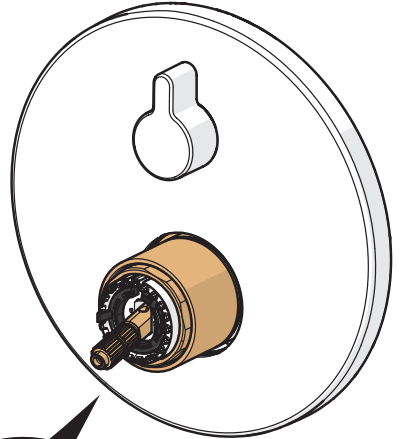


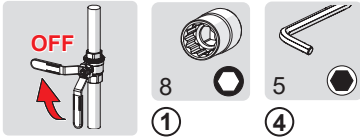




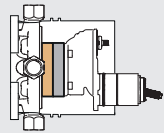
①

④

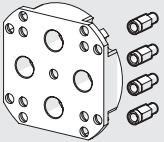




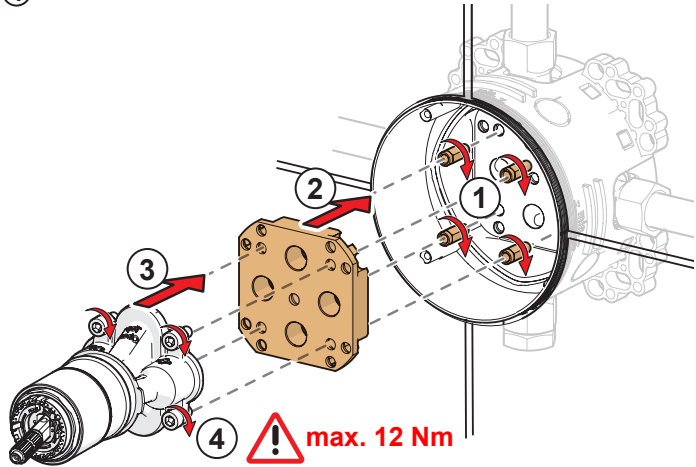
**59 914 182**



15 mm (max. 30 mm)

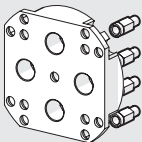


**Extension set**

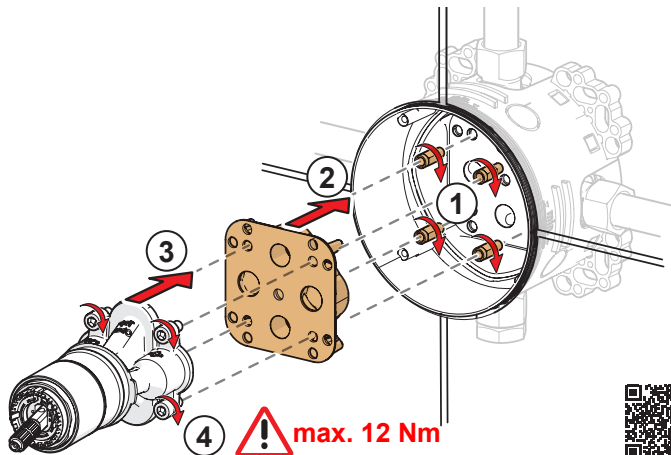


[http://movie.hansa.com/blbx\\_trblshoot\\_extension](http://movie.hansa.com/blbx_trblshoot_extension)

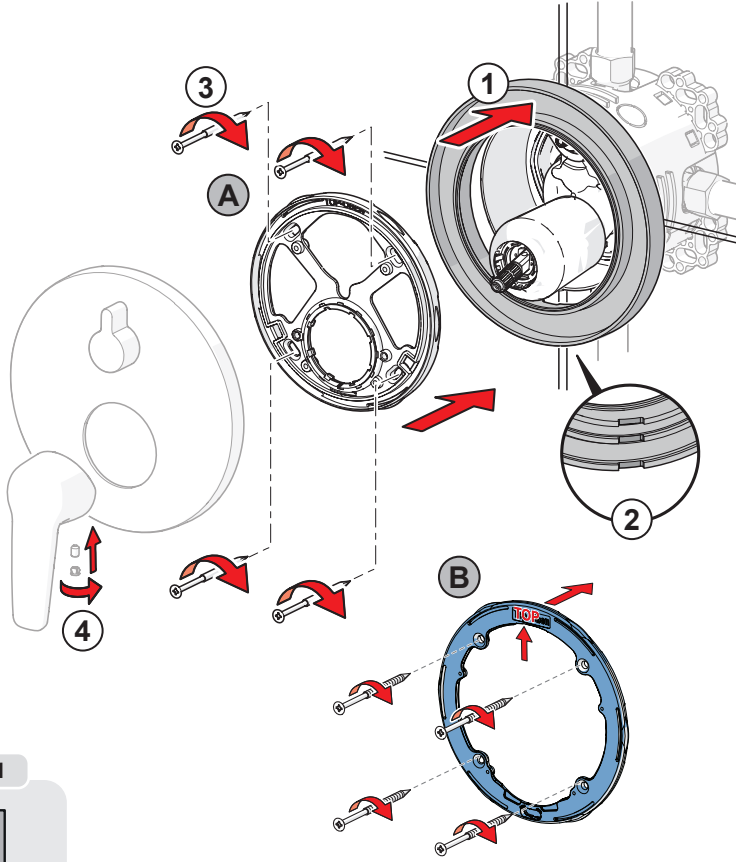
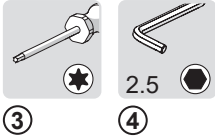
**59 914 184**



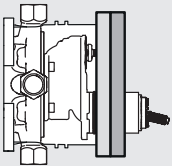
**Reverse adapter**



[http://movie.hansa.com/blbx\\_trblshoot\\_warmcold](http://movie.hansa.com/blbx_trblshoot_warmcold)



**59 914 191**

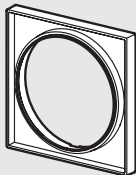


15 mm (max. 30 mm)



**Distance adapter**

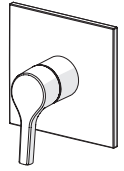
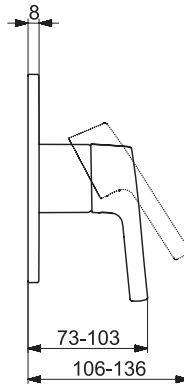
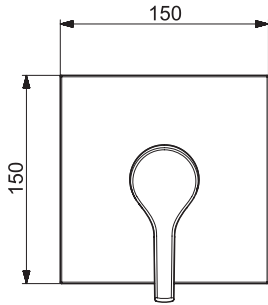
**59 914 192**





### 8051 9021

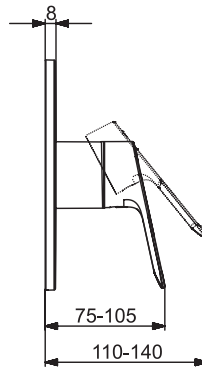
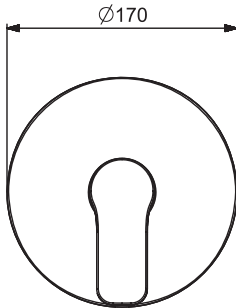
I (ISO 3822)  
EN 817  
50 - 1000 kPa  
0.25 l/s (300 kPa)  
max. +80°C



[mpi.hansa.com/80519021](http://mpi.hansa.com/80519021)

### 8056 9023

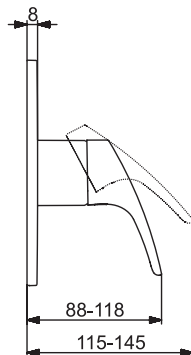
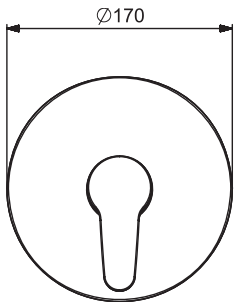
I (ISO 3822)  
EN 817  
50 - 1000 kPa  
0.25 l/s (300 kPa)  
max. +80°C



[mpi.hansa.com/80569023](http://mpi.hansa.com/80569023)

### 8185 9023

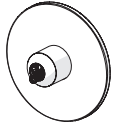
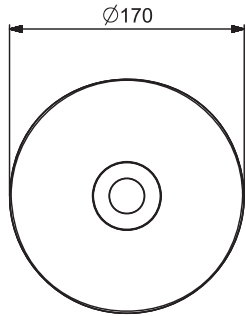
I (ISO 3822)  
EN 817  
50 - 1000 kPa  
0.25 l/s (300 kPa)  
max. +80°C



[mpi.hansa.com/81859023](http://mpi.hansa.com/81859023)

**8261 9020**

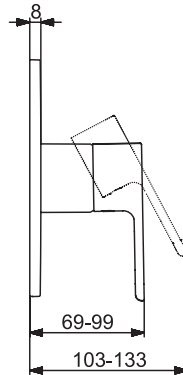
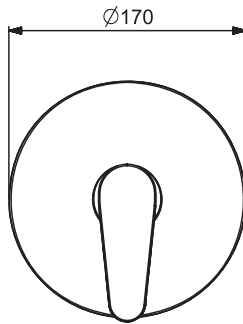
I (ISO 3822)  
EN 817  
50 - 1000 kPa  
0.25 l/s (300 kPa)  
max. +80°C



[mpi.hansa.com/82619020](http://mpi.hansa.com/82619020)

**8261 9023**

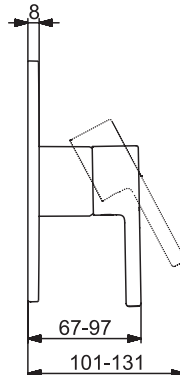
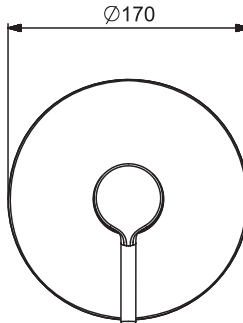
I (ISO 3822)  
EN 817  
50 - 1000 kPa  
0.25 l/s (300 kPa)  
max. +80°C



[mpi.hansa.com/82619023](http://mpi.hansa.com/82619023)

**8261 9027**

I (ISO 3822)  
EN 817  
50 - 1000 kPa  
0.25 l/s (300 kPa)  
max. +80°C

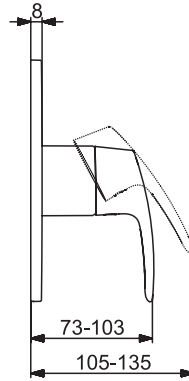
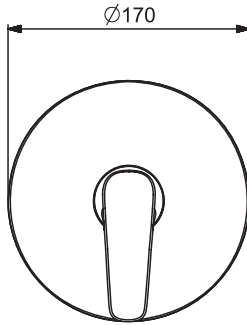


[mpi.hansa.com/82619027](http://mpi.hansa.com/82619027)



### 8527 9123

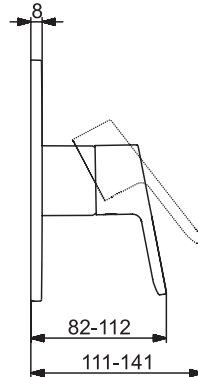
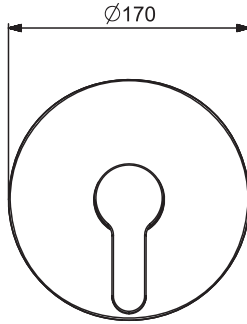
I (ISO 3822)  
EN 817  
50 - 1000 kPa  
0.25 l/s (300 kPa)  
max. +80°C



[mpi.hansa.com/85279123](http://mpi.hansa.com/85279123)

### 8991 9023

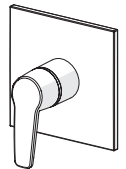
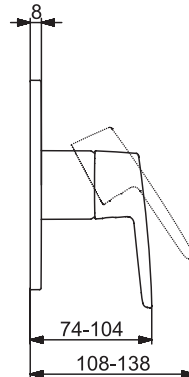
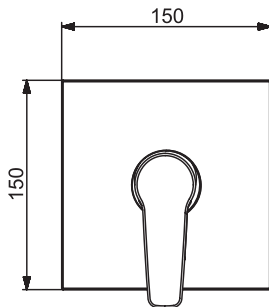
I (ISO 3822)  
EN 817  
50 - 1000 kPa  
0.25 l/s (300 kPa)  
max. +80°C



[mpi.hansa.com/89919023](http://mpi.hansa.com/89919023)

### 8061 9023

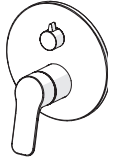
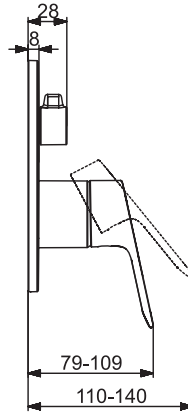
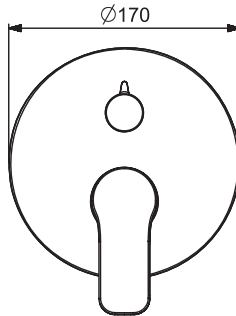
I (ISO 3822)  
EN 817  
50 - 1000 kPa  
0.25 l/s (300 kPa)  
max. +80°C



[mpi.hansa.com/80619023](http://mpi.hansa.com/80619023)

**8055 9023**

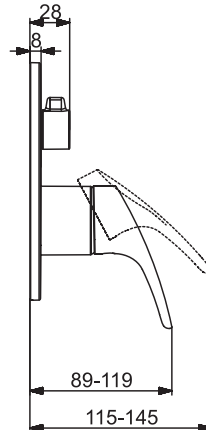
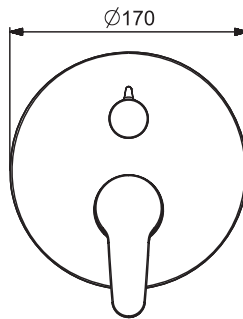
I (ISO 3822)  
EN 817  
50 - 1000 kPa  
0.33 / 0.25 l/s (300 kPa)  
max. +80°C



[mpi.hansa.com/80559023](https://mpi.hansa.com/80559023)

**8184 9023**

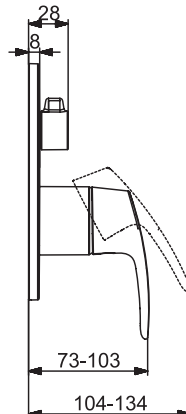
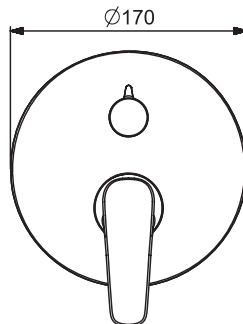
I (ISO 3822)  
EN 817  
50 - 1000 kPa  
0.33 / 0.25 l/s (300 kPa)  
max. +80°C



[mpi.hansa.com/81849023](https://mpi.hansa.com/81849023)

**8526 9123**

I (ISO 3822)  
EN 817  
50 - 1000 kPa  
0.33 / 0.25 l/s (300 kPa)  
max. +80°C

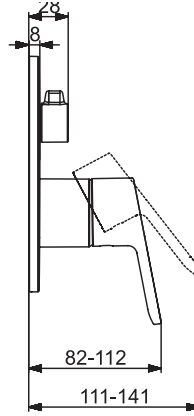
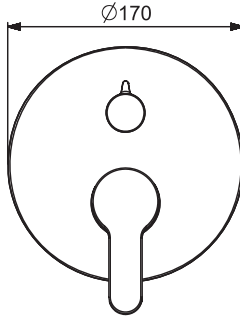


[mpi.hansa.com/85269123](https://mpi.hansa.com/85269123)



### 8990 9023

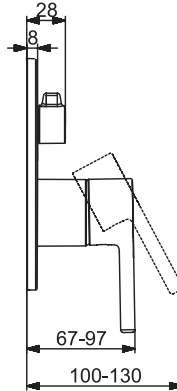
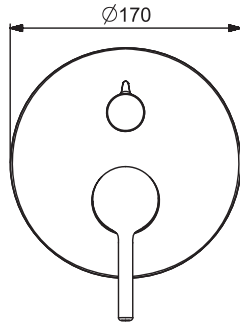
I (ISO 3822)  
EN 817  
50 - 1000 kPa  
0.33 / 0.25 l/s (300 kPa)  
max. +80°C



[mpi.hansa.com/89909023](http://mpi.hansa.com/89909023)

### 8260 9027

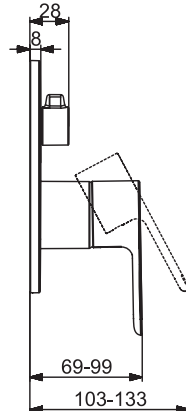
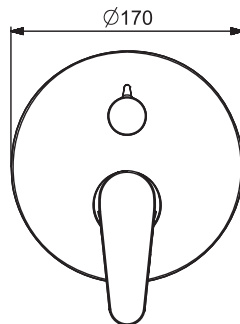
I (ISO 3822)  
EN 817  
50 - 1000 kPa  
0.33 / 0.25 l/s (300 kPa)  
max. +80°C



[mpi.hansa.com/82609027](http://mpi.hansa.com/82609027)

### 8260 9023

I (ISO 3822)  
EN 817  
50 - 1000 kPa  
0.33 / 0.25 l/s (300 kPa)  
max. +80°C

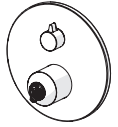
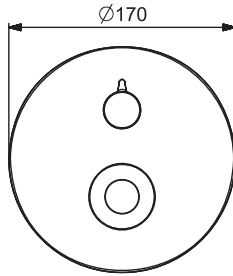


[mpi.hansa.com/82609023](http://mpi.hansa.com/82609023)



**8260 9020**

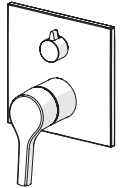
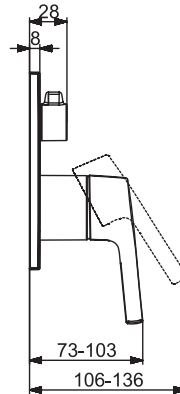
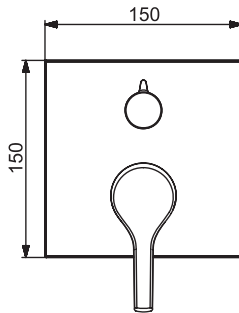
I (ISO 3822)  
 EN 817  
 50 - 1000 kPa  
 0.33 / 0.25 l/s (300 kPa)  
 max. +80°C



[mpi.hansa.com/82609020](http://mpi.hansa.com/82609020)

**8050 9021**

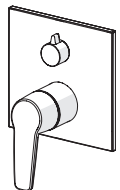
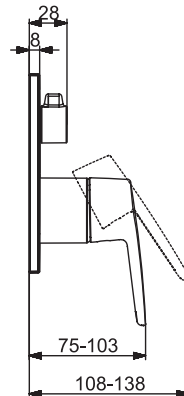
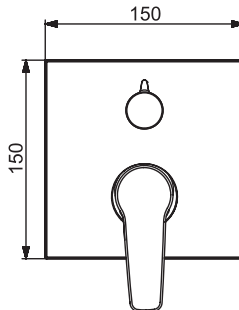
I (ISO 3822)  
 EN 817  
 50 - 1000 kPa  
 0.33 / 0.25 l/s (300 kPa)  
 max. +80°C



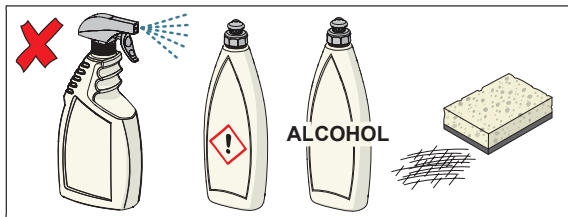
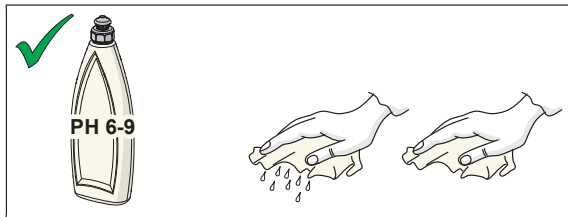
[mpi.hansa.com/80509021](http://mpi.hansa.com/80509021)

**8060 9023**

I (ISO 3822)  
 EN 817  
 50 - 1000 kPa  
 0.33 / 0.25 l/s (300 kPa)  
 max. +80°C



[mpi.hansa.com/80609023](http://mpi.hansa.com/80609023)



[cleaning.hansa.com](https://cleaning.hansa.com)







#### About Oras Group

Oras Group is a significant European provider of sanitary fittings: the market leader in the Nordics and a leading company in Continental Europe.

The company's mission is to create the smartest water experiences for everyone and its vision is to become the Perfect Flow Company.

The Group has two strong brands, Oras and Hansa. Oras Group is owned by Oras Invest, a family company, and an industrial owner.

The domicile of Oras Ltd, the parent company of the Group, is located in Rauma, Finland, and the Group has two manufacturing sites: Olesno (Poland) and Rauma (Finland).

The Group operates with its own staff in 17 markets. Oras Group's net sales were 233.5 million euros in 2021 and at the end of the period the company employed 1255 people.

HANSA Armaturen GmbH  
P. O. BOX 81 02 40  
D-70519 Stuttgart  
Sigmaringer Strasse 107  
D-70567 Stuttgart  
Tel.: +49 711 16 14 0  
Fax: +49 711 16 14 368  
info@hansa.de  
www.hansa.com

