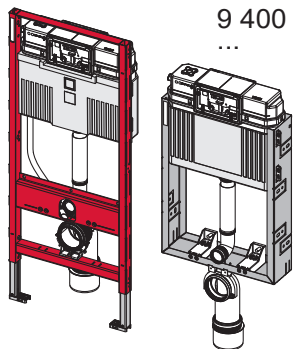
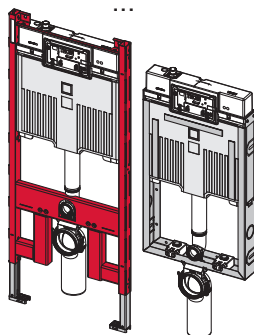


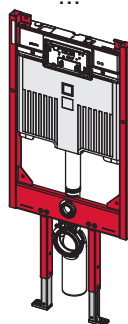
**A** Uni/Base 9 300 xxx  
9 370 xxx  
9 400 xxx  
...



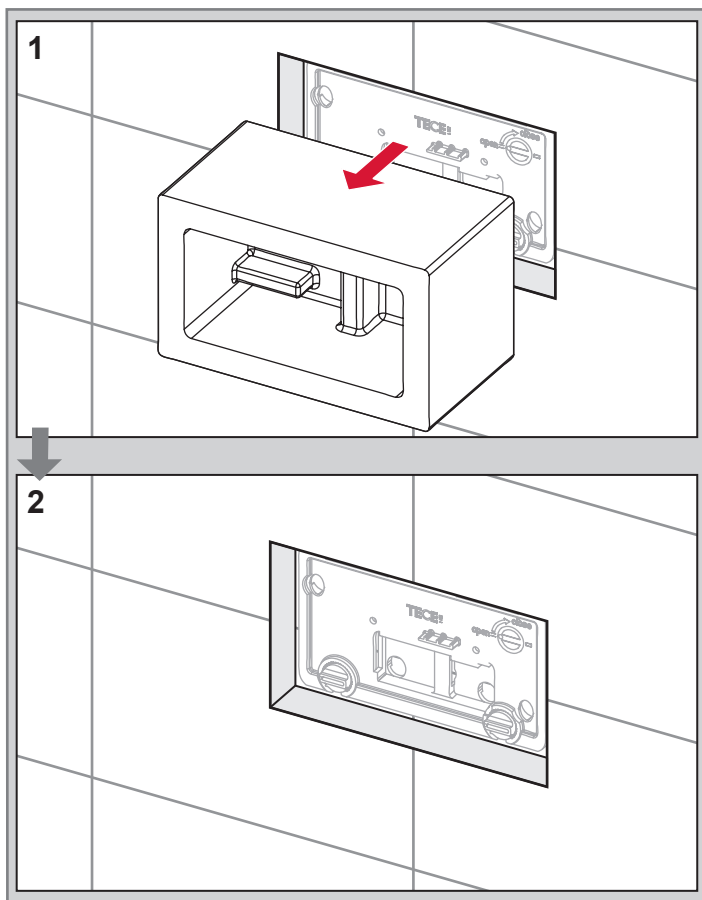
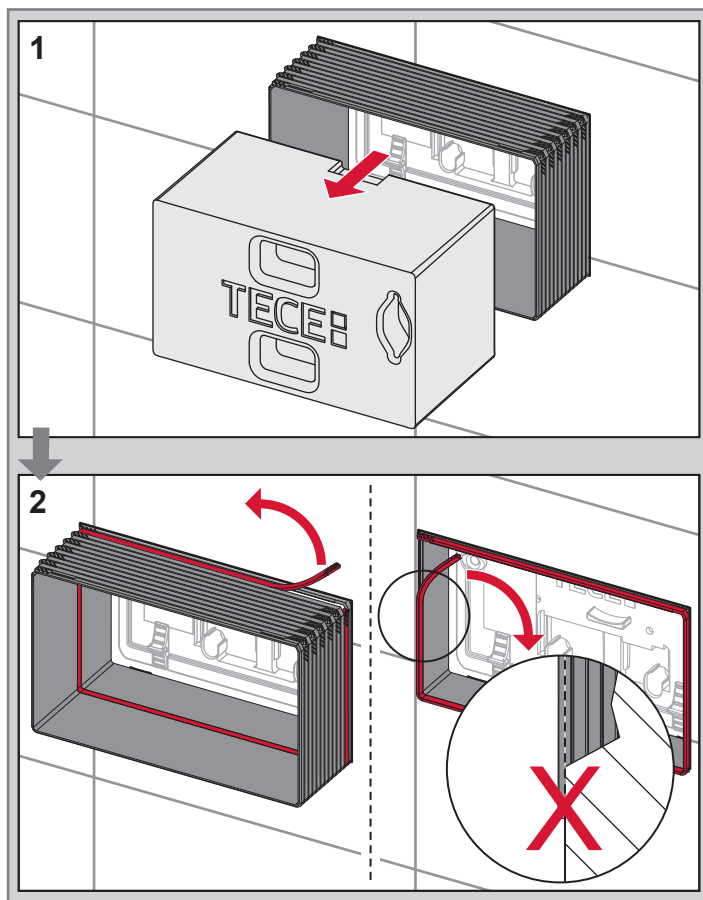
**B** Octa II 9 300 5xx  
9 370 5xx  
...

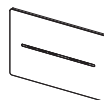


**Base 8** 9 400 55x  
9 370 55x  
...



**C** Base 320 Compact 320 9 300 6xx  
9 400 4xx  
...





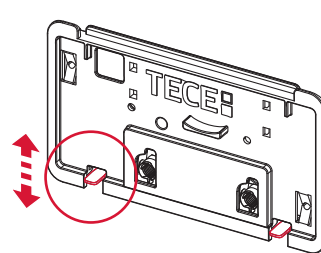
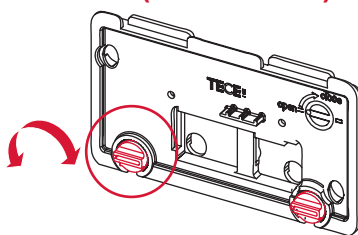
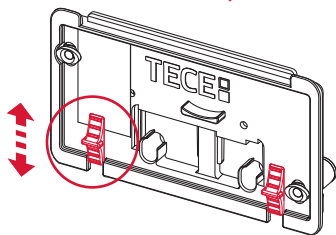
Uni / Base / Octa II

320 / Base 8

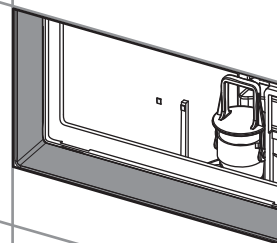
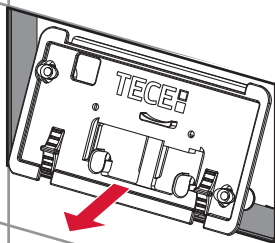
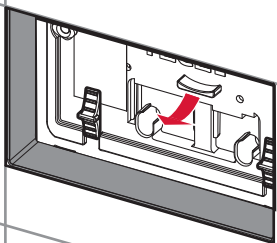
2021, ...

(2003 – 2020)

2023, ...

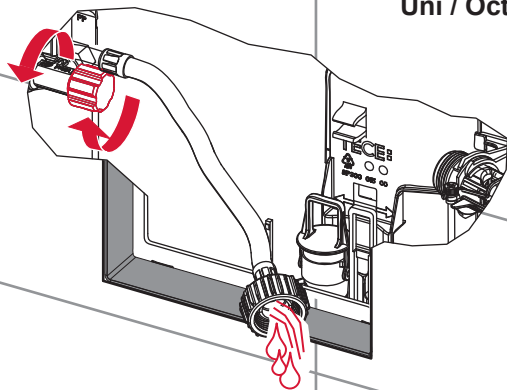


3



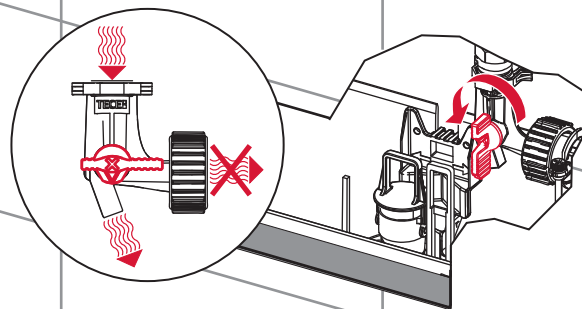
4

Uni / Octa II

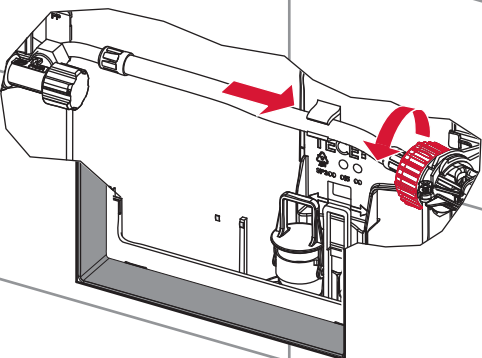


4

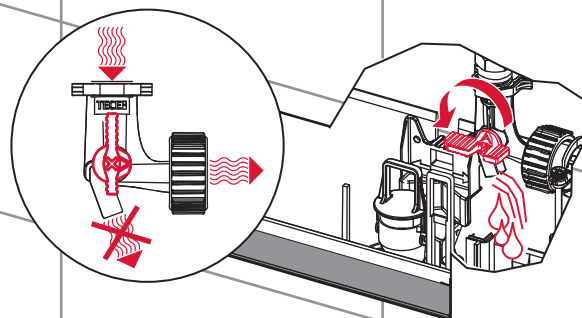
Base / 320

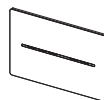


5

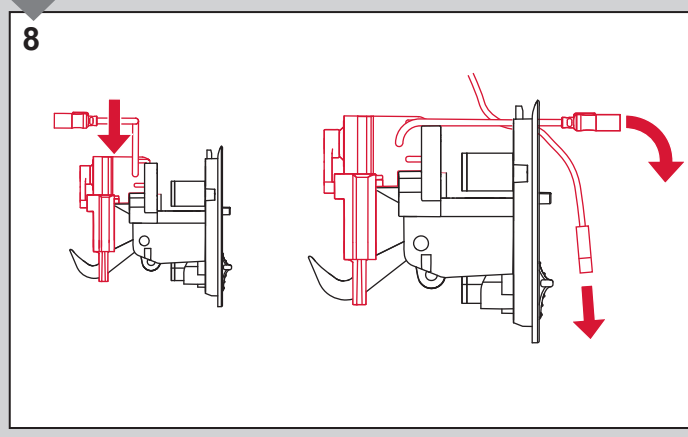
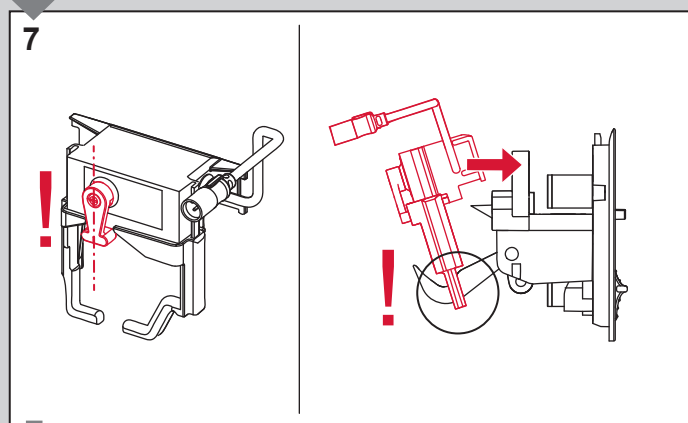
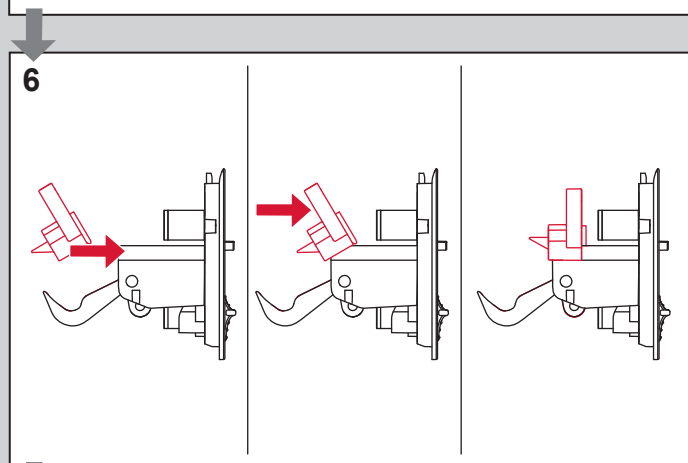
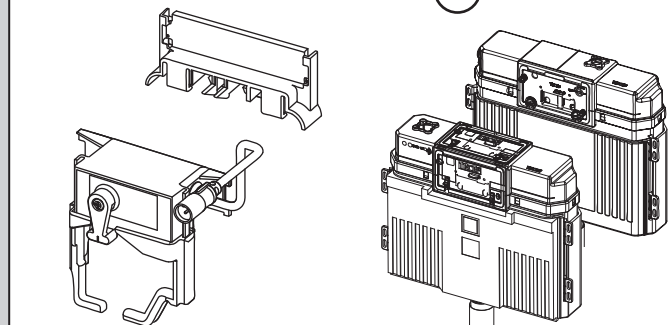


5

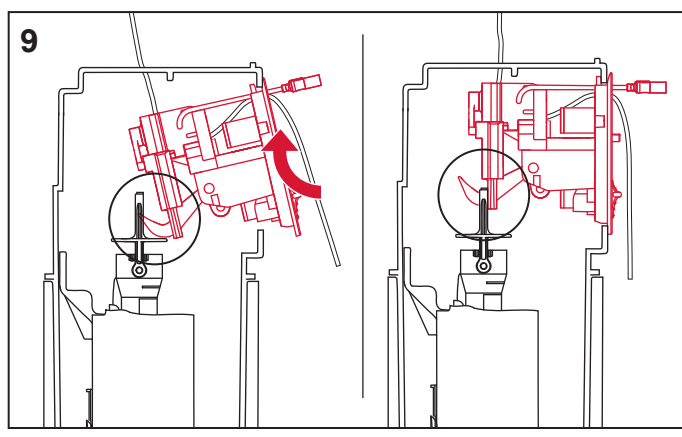
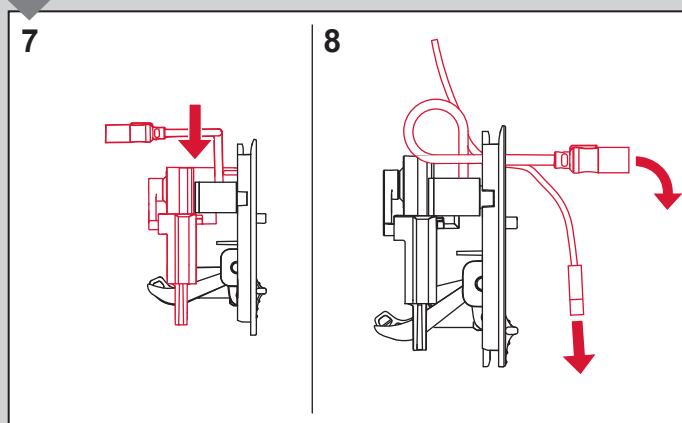
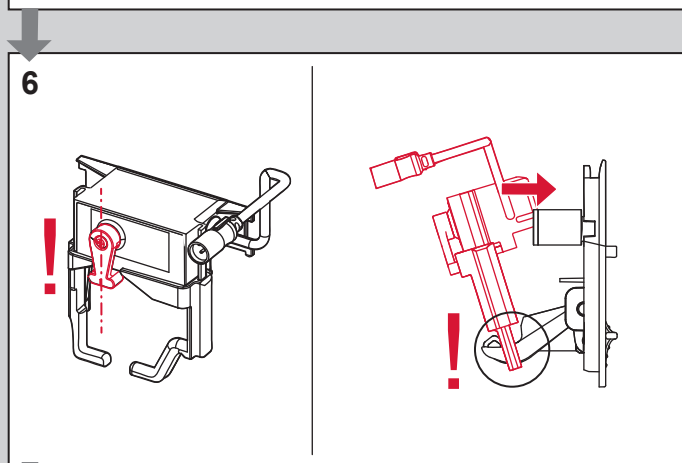
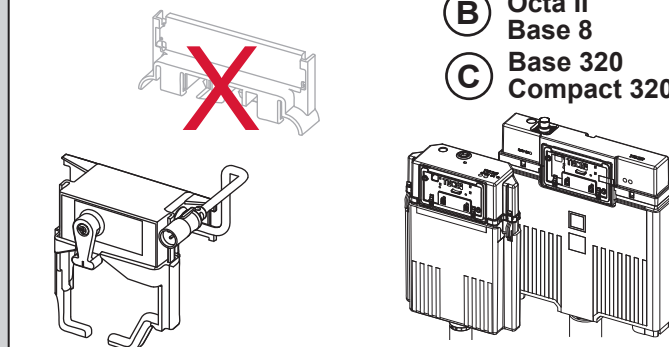


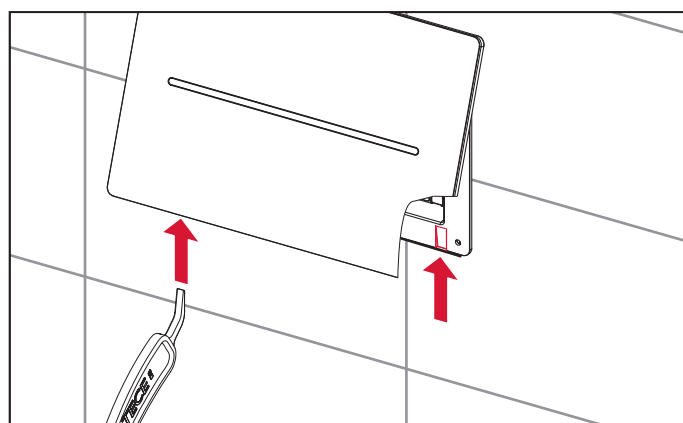
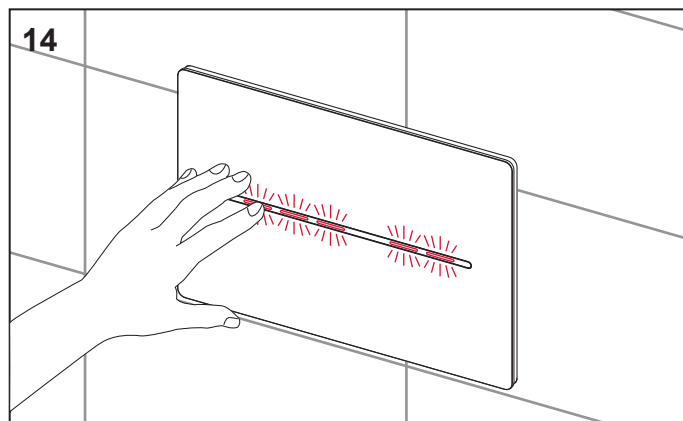
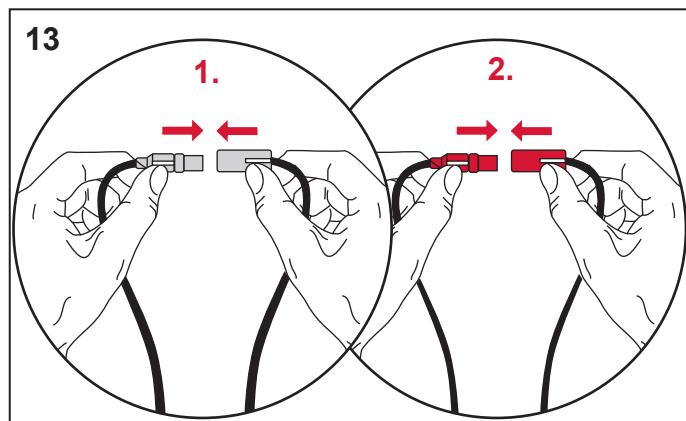
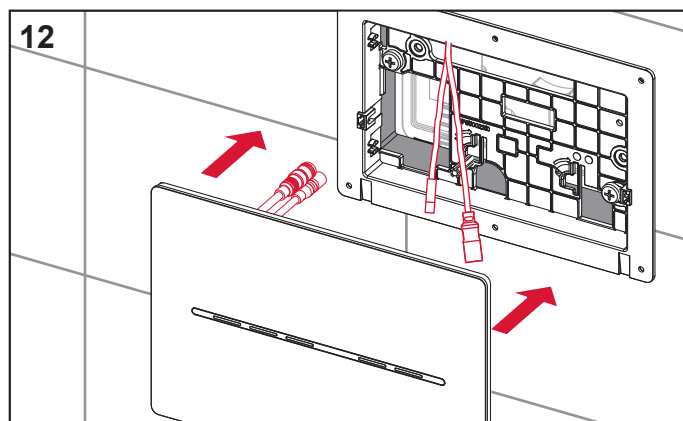
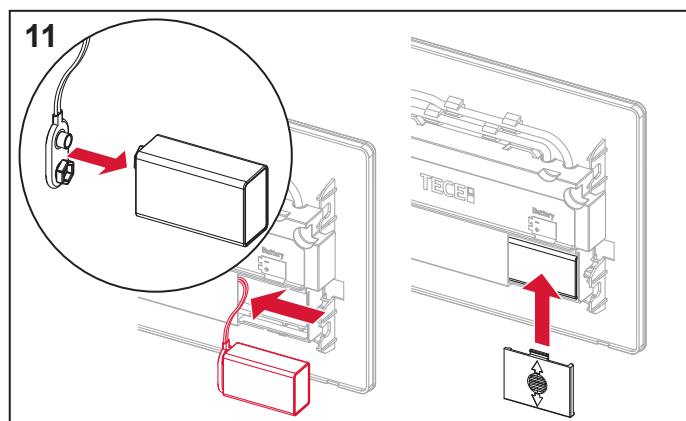
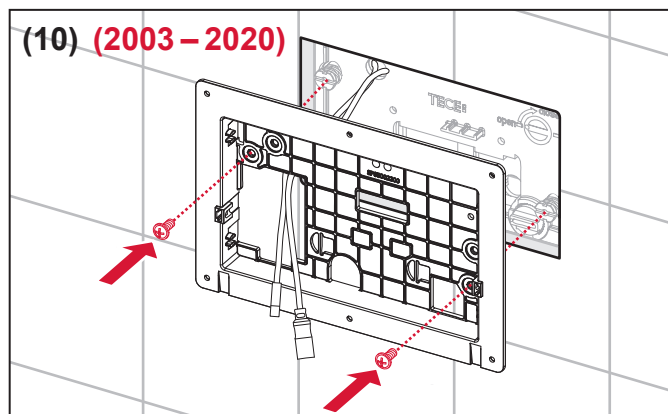
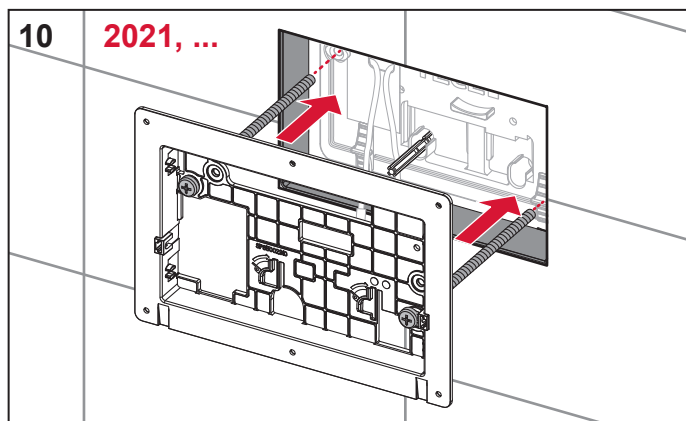
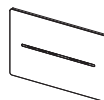


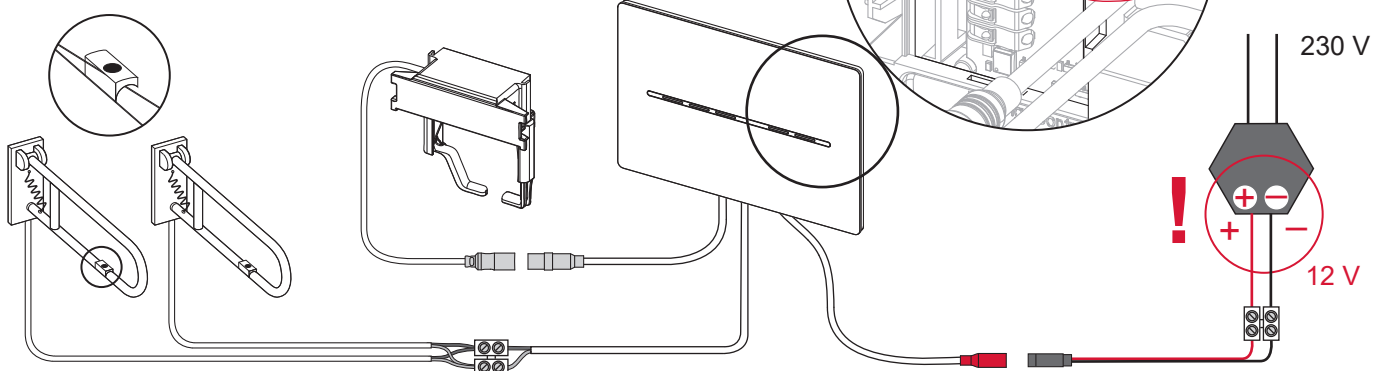
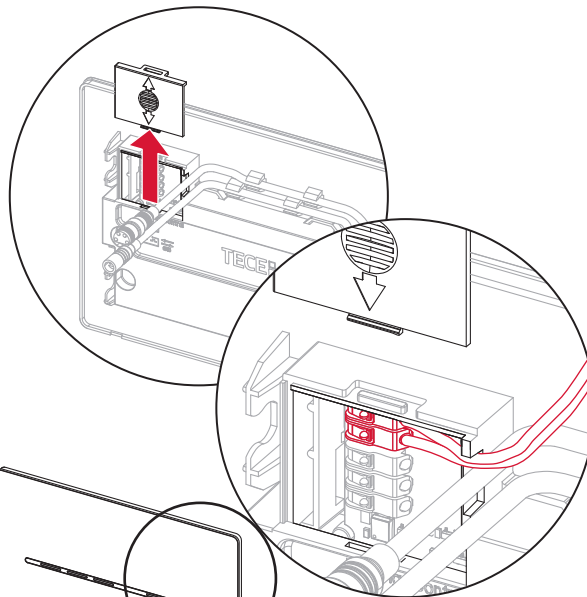
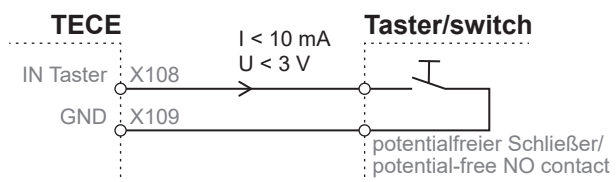
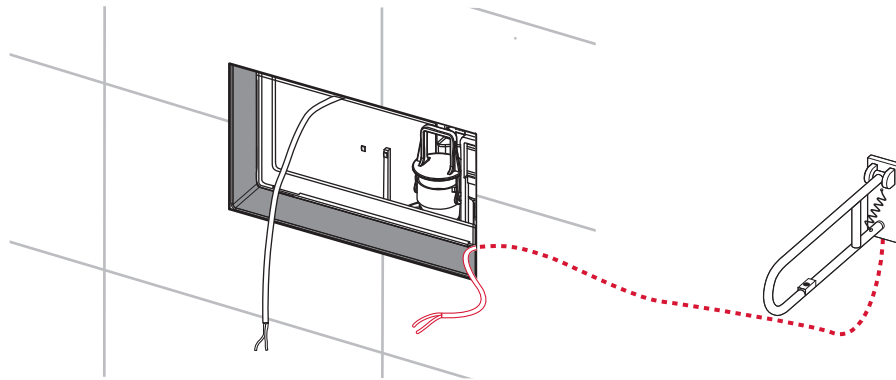
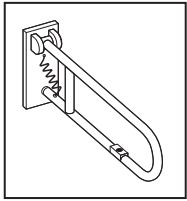
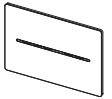
## A Uni/Base

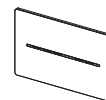


## B Octa II Base 8 C Base 320 Compact 320

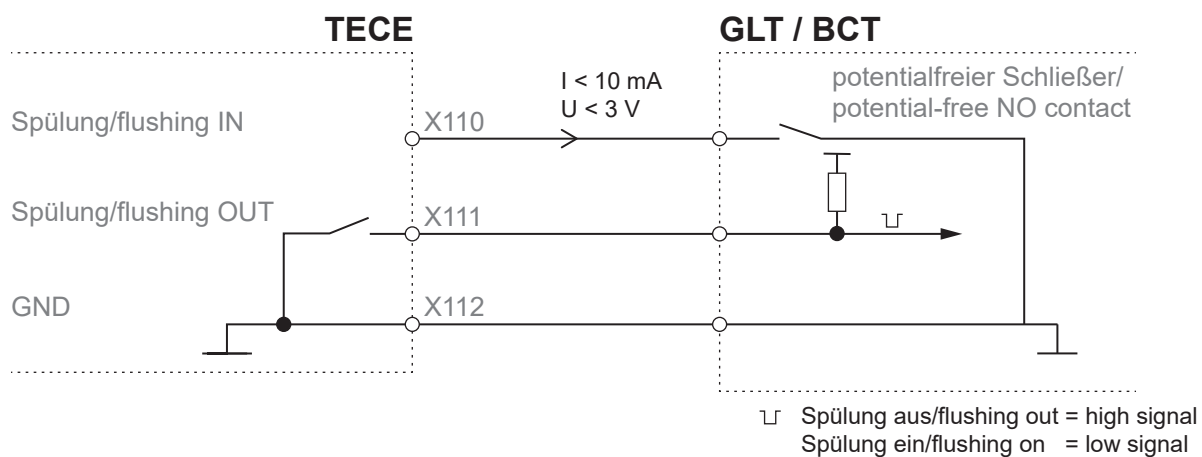








- (DE) Optionaler Anschluss an die Gebäudeleittechnik  
 (GB) Optional connection to the building management system  
 (IT) Collegamento opzionale al sistema di gestione dell'edificio



100 V – 240 V (AC)  
 50 – 60 HZ  
 max. 7 W  
 12 V DC



[www.tece.de/entsorgung.info](http://www.tece.de/entsorgung.info)

**TECE GmbH**  
 Hollefeldstrasse 57  
 D - 48282 Emsdetten  
 0049 (0)2572 9280  
[info@tece.de](mailto:info@tece.de)  
[www.tece.de](http://www.tece.de)

SP430 211 00 c